

**HDL**®

Height · Dedicated · Leading

***KNX/EIB BUS***



# HDL KNX / EIB-BUS

(Intelligent Installation Systems)

## Product Manual

### Contents

|          |   |           |
|----------|---|-----------|
| <b>1</b> | <b>General.....</b>                             | <b>4</b>  |
| 1.1      | Product Function.....                           | 5         |
| <b>2</b> | <b>Hardware.....</b>                            | <b>6</b>  |
| 2.1      | Technical data.....                             | 6         |
| 2.2      | Dimension drawings.....                         | 9         |
| 2.3      | Wiring diagram.....                             | 9         |
| 2.4      | Maintenance and Cautions.....                   | 11        |
| <b>3</b> | <b>Software.....</b>                            | <b>12</b> |
| 3.1      | Database functions overview.....                | 12        |
| 3.2      | Object/Association/Group address define.....    | 13        |
| 3.3      | Function parameter "General".....               | 14        |
| 3.4      | Function parameter Channel "N".....             | 15        |
| 3.5      | Channel mode "Switch Actuator".....             | 16        |
| 3.5.1    | Channel function.....                           | 19        |
| 3.5.2    | Channel function parameter.....                 | 19        |
| 3.5.3    | Channel function "time".....                    | 21        |
| 3.5.3.1  | Channel function "time-Flashing".....           | 22        |
| 3.5.3.2  | Channel function "time-Staircase lighting"..... | 23        |
| 3.5.3.3  | Channel function "time-ON/OFF delay".....       | 25        |
| 3.5.4    | Channel function "scene".....                   | 27        |
| 3.5.5    | Channel function "threshold".....               | 27        |
| 3.5.5.1  | Channel function "1byte threshold".....         | 29        |
| 3.5.5.2  | Channel function "2byte threshold".....         | 31        |
| 3.5.6    | Channel function "curtain".....                 | 33        |
| 3.5.7    | Channel function "logic".....                   | 35        |
| 3.5.8    | Channel "Heating Actuator".....                 | 38        |
| <b>4</b> | <b>Communication objects description.....</b>   | <b>42</b> |

---

|          |   |           |
|----------|---|-----------|
| 4.1      | Objects “General” and “Output N”.....         | 42        |
| 4.2      | All objects with channel “N”.....             | 42        |
| 4.2.1    | Objects “Response”.....                       | 43        |
| 4.2.2    | Objects “R/W statistics for time”.....        | 43        |
| 4.2.3    | Objects “Alarm for ON time out” .....         | 44        |
| 4.2.4    | Objects “R/W statistics counter”.....         | 44        |
| 4.2.5    | Objects “Alarm for ON counter out”.....       | 44        |
| 4.2.6    | Objects “Flashing”.....                       | 44        |
| 4.2.7    | Objects “Staircase light” .....               | 45        |
| 4.2.8    | Objects “Change staircase lighting time”..... | 45        |
| 4.2.9    | Objects “Alarm staircase lighting”.....       | 45        |
| 4.2.10   | Objects “Scene”.....                          | 46        |
| 4.2.11   | Objects “Threshold”.....                      | 46        |
| 4.2.12   | Objects “Blinds”.....                         | 47        |
| 4.2.13   | Objects “Logic”.....                          | 48        |
| 4.2.14   | Objects “Heating”.....                        | 48        |
| 4.2.15   | Objects “Forced position”.....                | 49        |
| <b>5</b> | <b>Application.....</b>                       | <b>50</b> |
| 5.1      | Program functions diagram.....                | 50        |
| 5.2      | Scene.....                                    | 51        |
| 5.3      | Threshold.....                                | 51        |
| 5.4      | Blinds.....                                   | 52        |
| 5.5      | Logical function .....                        | 53        |
| 5.6      | PWM control .....                             | 54        |

## **1-General**

HDL KNX / EIB series switch actuator output modules are developed by HDL. Using KNX/EIB BUS communicate with other KNX devices. Database need to be downloaded to the switch actuator by using ETS2 V1.3/ETS 3.0/ETS4, The document descript how to use the products . Our products use standard according to EMC, electrical safety, environmental conditions.

The switch actuators are used to control switched loads, such as:

- \* **Lighting**
- \* **Motor**
- \* **Blinds**
- \* **Heating**
- \* **Other Equipments**

The rights and the copyright to this manual are exclusively the property of HDL.

## 1.1-Product Function



The switch Actuators can switch for 4, 8 and 12 channels independent AC/DC loads. The outputs for MAX 16 A be switched ON or OFF on every output channel and can manually switch too. The M/R4.16.1 no need require an additional power supply. The M/R8.16.1,M/R12.16.1 require an additional 24VDC power supply if need frequently operation all of channel same time, but normal operation is good also if there is no additional power supply. The following functions can be set individually for each output channel:

1-Channel state response.

2-Channel state after bus voltage failure and recovery

3-Time function

\* Flashing

\* Staircase light

\* Delay

\*4-Scene

\* scene number:1-64

\* 5-Threshold

\* Two threshold value

6-Curetain

\* top/left<->bottom/right

7-Logic

\* AND/OR/XOR/GATE

8-Heat control

\* PWM

The type of the switch Actuator Description as following:

**M/Rx.y.z**

\* x=channel number

\* y=Current 16A/channel

\* z=Application Version

## 2- Hardware

The technical properties of HDL KNX/EIB Switch Actuators as the following sections.

### 2.1 Technical data

#### Power supply

|   |               |
|---|---------------|
| * Operating voltage (supply by the bus)   | 21...30 V DC, |
| * Current consumption EIB / KNX (operate) | < 15 mA       |
| * Current consumption EIB / KNX (standby) | < 5 mA        |
| * Power consumption EIB / KNX (operate)   | < 450 mW      |
| * Power consumption EIB / KNX (standby)   | < 150 mW      |

#### Output nominal values

|                                      |                        |        |         |
|--------------------------------------|------------------------|--------|---------|
| * Type of Device M/R                 | 4.16.1                 | 8.16.1 | 12.16.1 |
| * Number of contacts                 | 4                      | 8      | 12      |
| * In rated current                   | 16 A                   | 16A    | 16A     |
| * Power loss per device at max. load | 2.7 W                  | 5.4W   | 8 W     |
| * Un rated voltage                   | 250/440V AC (50/60 Hz) |        |         |

#### Output switching currents

|                                     |                            |
|-------------------------------------|----------------------------|
| * AC operation ( $\cos\phi = 0.8$ ) | 12A / 230 V                |
| * Fluorescent lighting load         | 16 A / 250 V (150 $\mu$ F) |
| * Minimum switching capability      | 0.1mA/1V                   |

DC current switching capability (ohmic load) 16 A / 12 V DC

#### Output life expectancy

|  |           |
|--|-----------|
| * Mechanical Life                            | > 1000000 |
| * Electrical Life (240 V/ $\cos\phi = 0.8$ ) | > 100000  |

#### Output switching delay without additional DC power

|   |        |        |         |
|---|--------|--------|---------|
| * Max. delay time of relay per position changes (charge time of the capacity) | 4.16.1 | 8.16.1 | 12.16.1 |
|   | 400ms  | 400ms  | 400ms   |

Note: it has voltage (capacity of relay driver) detect function in device, it stop active and keep the state of relays in the memory of device when the voltage is going to down to stop level so this function can prevent the relay is not active success, the relays can active again in according to the state of relays in memory when the voltage (capacity of relay driver) is going to up to active level, this function is very useful for without additional DC power application in system, and the delay time is approx 0.4s on switch state change when the charge of the capacity is not enough.

#### Output switching delay with additional DC power

|   |        |         |
|---|--------|---------|
| * Max. delay time of relay per position changes (charge time of the capacity) | 8.16.1 | 12.16.1 |
|   | 100ms  | 100ms   |



Note: in some of application need ON/OFF the relay frequently and not allow too much delay time, in that case it can be connected a additional 24-30VDC power supply, the Max. current is requested 24mA when the relay is active ,the standby current is requested 4mA , the delay time is approx 100ms on switch state change when the charge of the capacity is not enough

### Connections

|                     |  |
|---------------------|--|
| * EIB / KNX         | Bus Connection Terminal<br>0.8 mm Ø, single core   |
| * Load circuits     | Screw terminal with Slotted head<br>0.2...4 mm <sup>2</sup> multi- core<br>0.4...6 mm <sup>2</sup> single-core |
| * cable shoe        | 12 mm  |
| * Tightening torque | Max. 0.8 Nm  |

### Operating and display

|  |  |
|--|--|
| * Red LED and EIB / KNX push button all in one | For assignment of the physical address |
| * Contact position indication                  | Relay lever                            |

### Temperature range

|             |                   |
|-------------|-------------------|
| * Operation | - 5 °C ~ + 45 °C  |
| * Storage   | - 25 °C ~ + 55 °C |
| * Transport | - 25 °C ~ + 70 °C |

### Environment conditions

|            |                          |
|------------|--------------------------|
| * humidity | max. 95 % Non-condensing |
|------------|--------------------------|

### Appearance design

|                             |                               |        |         |
|-----------------------------|-------------------------------|--------|---------|
| * Modular                   | DIN-Rail Modular installation |        |         |
| * Type-M/R                  | 4.16.1                        | 8.16.1 | 12.16.1 |
| * Dimensions (H x W x D)    | 90 x W x 64                   |        |         |
| * Width W (unit mm)         | 72                            | 144    | 216     |
| * Mounting width (1P=18 mm) | 4P                            | 8P     | 12P     |
| * Mounting depth (unit mm)  | 64                            | 64     | 64      |

### Weight (unit kg)

|      |      |      |
|------|------|------|
| 0.26 | 0.49 | 0.72 |
|------|------|------|

### Installation

Use 35 mm mounting rail

### Mounting position

Electric switch box

### Material and Colour

Plastic, grey

### Standard and Safety

Certificated

|                |                         |
|----------------|-------------------------|
| * LVD Standard | EN60669-2-1 , EN60669-1 |
| *EMC Standard  | EN50090-2-2             |

### CE mark

\* In accordance with the EMC guideline and low voltage guideline

### Pollutant

Comply with RoHS

**Note:** All of loads, at 230 V AC

|   |        |
|---|--------|
| <b>Motors</b>                                       | 4HP    |
| <b>Lamps</b>  |        |
| * Incandescent lamp load                            | 3500W  |
| <b>Low-volt halogen lamps</b>                       |        |
| * Inductive transformer                             | 1800 W |
| * Electronic transformer                            | 2000 W |
| * Halogen lamp 230 V                                | 3500 W |
| <b>Mercury-vapour lamp</b>                          |        |
| * Uncompensated luminaire                           | 2800 W |
| * Parallel compensated                              | 2800 W |
| <b>Fluorescent lamp T5 / T8</b>                     |        |
| * Uncompensated luminaire                           | 3500 W |
| * Parallel compensated                              | 2000 W |
| * DUO lamp  | 2000 W |
| <b>Dulux lamp</b>                                   |        |
| * Uncompensated luminaire                           | 1500 W |
| * Parallel compensated                              | 1500 W |
| <b>Switching performance (contact)</b>              |        |
| * Max. peak inrush-current I <sub>p</sub> (120 μs)  | 600 A  |
| * Max. peak inrush-current I <sub>p</sub> (240 μs)  | 480 A  |
| * Max. peak inrush-current I <sub>p</sub> (480 μs)  | 300 A  |
| * Max. peak inrush-current I <sub>p</sub> (1000 μs) | 170 A  |

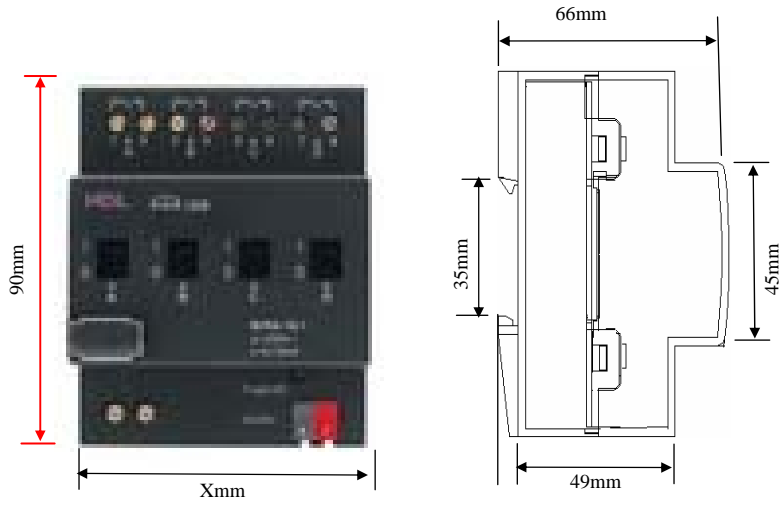
## Application table

| Type                                 | M/R4.16.1 | M/R8.16.1 | M/R12.16.1 |
|--------------------------------------|-----------|-----------|------------|
| Max. number of communication objects | 90        | 170       | 250        |
| Max. number of group addresses       | 254       | 254       | 254        |
| Max. number of associations          | 254       | 254       | 254        |

Note: The programming requires the EIB Software Tools ETS2 V1.3 or ETS3.0 or ETS4. If use ETS2 V1.3, then import "\*.vd2". If use ETS3.0, then Import "\*.vd3". If use ETS4, the import ".knxprod"

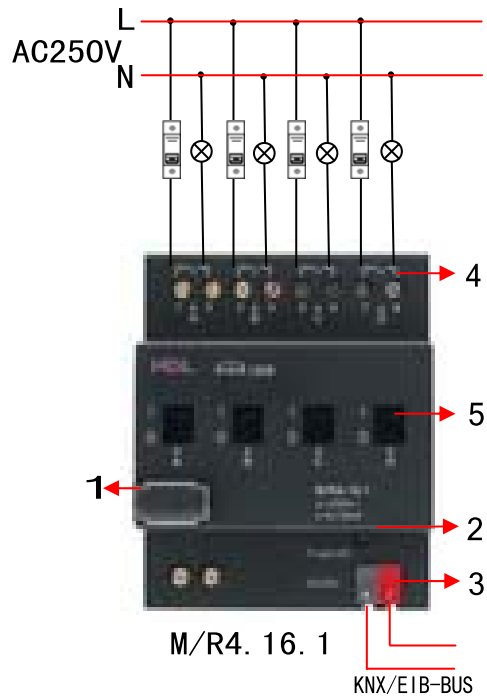


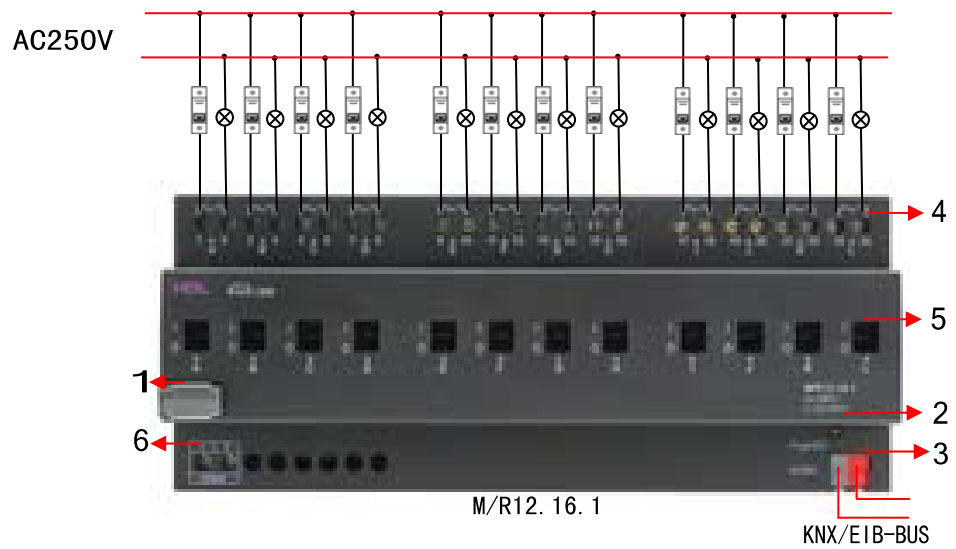
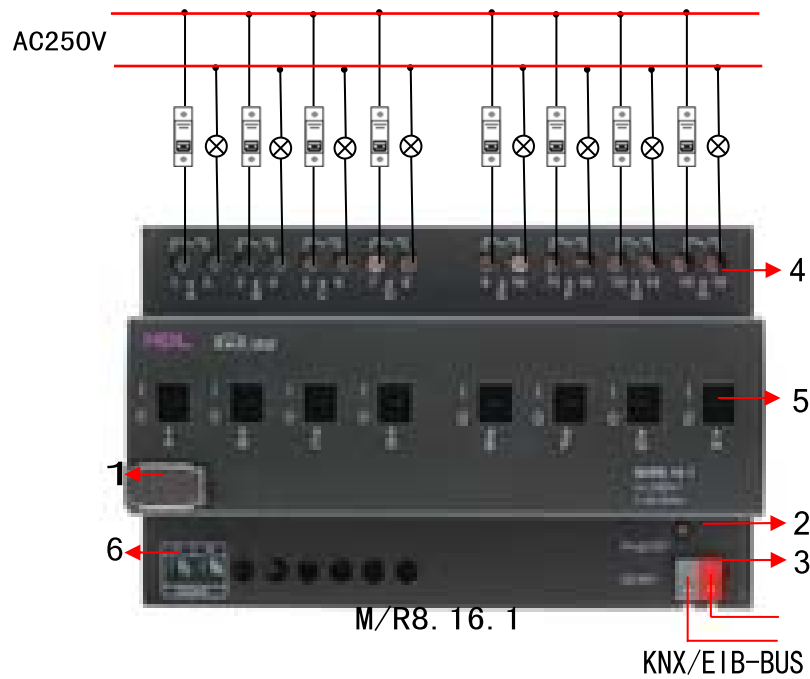
2.2 Dimension drawings



|   |           |           |            |
|---|-----------|-----------|------------|
|   | M/R4.16.1 | M/R8.16.1 | M/R12.16.1 |
| X | 72mm      | 144mm     | 216mm      |

2.3 Wiring diagram





- 1 Label area
- 2 Programming button & Programming LED
- 3 KNX/EIB Bus Connector
- 4 Terminal for Load Connection
- 5 Contact position indication and manual operation

6 Additional power DC24V (Max.24mA in operate , Min. 4mA in standby) optional

- Note:**
- a) Dimensions of the space to be provided for each switch
  - b) Dimensions and position of the means for supporting and fixing the switch within this space
  - c) Minimum clearance between the various parts of the switch and the surrounding parts where fitted
  - d) Minimum dimensions of ventilating opening , if needed, and their correct arrangement.
  - e) The protective devices (e.g. fuses, automatic protective devices, etc.) to be connected to the load to avoid overloading

## 2.4 Maintenance and Cautions

- \*Please read this user manual carefully before any operation.
- \*Don't close to the interfering devices.
- \*The site should be ventilated with good cooling environment.
- \*Pay attention to damp proof, quakeproof and dustproof.
- \*Avoid rain, other liquids or caustic gas.
- \*Please contact professional maintenance staff or HDL service center for repair or fix.
- \*Remove the dust regularly and do not wipe the unit with the volatile liquids like alcohol, gasoline, etc.
- \*If damaged by damp or liquid, turn off it immediately.
- \*Regularly check the circuitry and other related circuit or cables and replace the disqualified circuitry on time.
- \*For security, each circuit to connect an MCB or fuse
- \*Installation location should be well-ventilated, pay attention to moisture, shock, dust proof.

### 3- Software

HDL KNX/EIB Switch Actuators database use ETS3.0 to do the design. The device types are M/R4.16.1, M/R8.16.1 and M/R12.16.1, and the databases name are "Switch 4fold 16A", "Switch 8fold 16A", "Switch 12fold 16A". All Interface and the functions Apply parameters please overview the following description of the paragraph.

Each channel output of the Switch Actuators are independent and the same. So, Understand only one channel output is enough. The following paragraph will description of the first channel output in detail.

#### 3.1 Database functions Overview

The following table provide an overview of the functions and some parameters with the switch actuators:

| Switch function                           | M/R4.16.1 | M/R8.16.1 | M/R12.16.1 |
|---|-----------|-----------|------------|
| <b>General</b>                            | ---       | ---       | ---        |
| Cycle telegram (heartbeat)                | Y         | Y         | Y          |
| Switch delay after recover                | Y         | Y         | Y          |
| <b>Switch Actuator</b>                    | ---       | ---       | ---        |
| Save statistic for ON switching 'time'    | Y         | Y         | Y          |
| Save statistic for ON switching 'counter' | Y         | Y         | Y          |
| Voltage fail state                        | Y         | Y         | Y          |
| Voltage Recovery state                    | Y         | Y         | Y          |
| <b>Time</b>                               | ---       | ---       | ---        |
| Flashing                                  | Y         | Y         | Y          |
| Staircase lighting                        | Y         | Y         | Y          |
| ON/OFF delay                              | Y         | Y         | Y          |
| <b>Scene</b>                              | ---       | ---       | ---        |
| SceneNO.1-64                              | Y         | Y         | Y          |
| <b>Threshold</b>                          | ---       | ---       | ---        |

|                             |     |     |     |
|-----------------------------|-----|-----|-----|
| Threshold lower             | Y   | Y   | Y   |
| Threshold middle            | Y   | Y   | Y   |
| Threshold upper             | Y   | Y   | Y   |
| <b>Curtain</b>              | --- | --- | --- |
| Blinds<br>UP/DOWN           | Y   | Y   | Y   |
| Blinds<br>Adjustment        | Y   | Y   | Y   |
| <b>Logic</b>                | --- | --- | --- |
| AND                         | Y   | Y   | Y   |
| OR                          | Y   | Y   | Y   |
| XOR                         | Y   | Y   | Y   |
| GATE                        | Y   | Y   | Y   |
| <b>Heating<br/>Actuator</b> | --- | --- | --- |
| Voltage fail state          | Y   | Y   | Y   |
| Recovery                    | Y   | Y   | Y   |
| Switch state<br>Response    | Y   | Y   | Y   |
| 1bit/1byte<br>PWM control   | Y   | Y   | Y   |
| Forced position             | Y   | Y   | Y   |

Table1: Database application overview.

**Note:** For each function and mode, can only be used alone, but "ON/OFF delay" function can be used with "switch actuator" mode and scene function .

### 3.2 Object/Association/Group address define

In following table, The objects is assigned to the some function of the channel output pages, If active some functions and the object will be valid. One or more group addresses can be assigned to a object. The association will connect group addresses to the object.

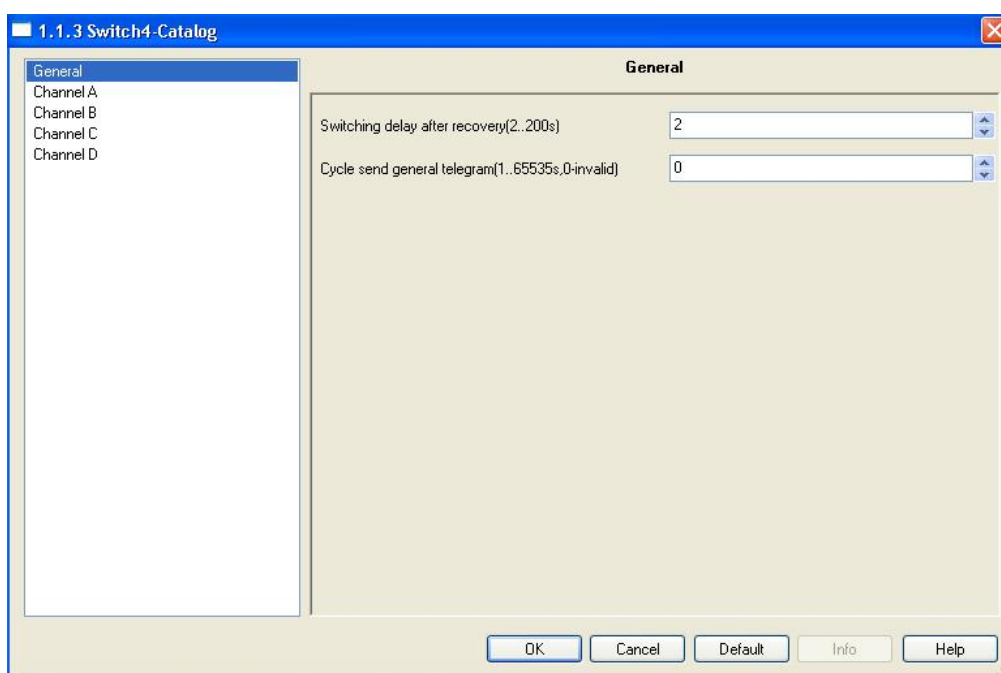
| Name              | type       | Max. number of communication objects | Max. number of associations | Max .number of group addresses |
|-------------------|------------|--------------------------------------|-----------------------------|--------------------------------|
| Switch 4fold 16A  | M/R4.16.1  | 90                                   | 254                         | 254                            |
| Switch 8fold 16A  | M/R8.16.1  | 170                                  | 254                         | 254                            |
| Switch 12fold 16A | M/R12.16.1 | 250                                  | 254                         | 254                            |

Table2: Overview the max. number of the objects, max.

number of associations and max. number of the group addresses

**Note:** ETS2V1.3-> Import “VD2”  
ETS3.0-> Import “VD3” to “VD5”.  
ETS4-> Import “.KNXPROD”.

### 3.3 Function parameter “General”



**Fig1:** “General” parameter windows

In the parameter of the general windows can set two parameters “Switching delay after recovery ” and “Cycle send general telegram”.

#### ---Switching delay after recovery(2..200s)

Can operate relay for a delay time 2..200s after the power on. The default value is 2 seconds. The Min. value is 2 seconds, and the max. value is 200 seconds.

Options: **2...200s**

When the power on and timer start, and when the time out, The switch can be allow operating . This function is selected by user

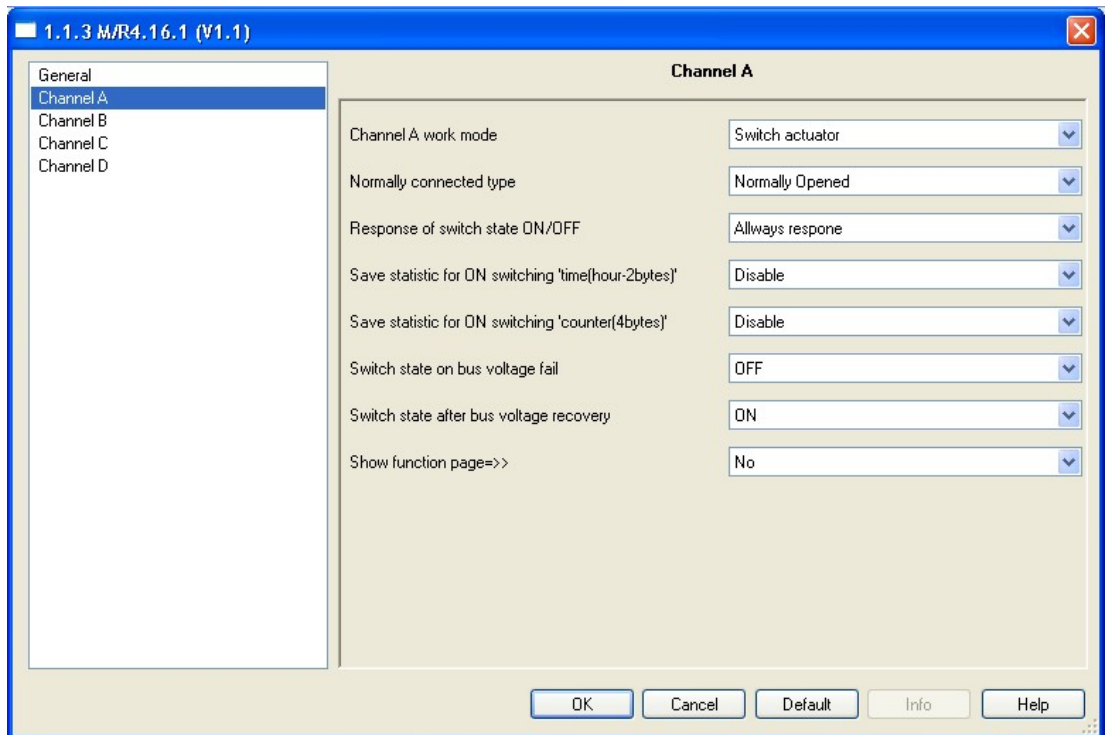
#### ---Cycle send general telegram(1..65535s,0-invalid)

The range of the parameter is 0 to 65535s. Zero of parameter disable the function , other of parameter enable this function

Options: **0...65535s**

The parameter set to nonzero, Device will send a telegram data cyclically when time out. Send the value alternately between 0 and 1.

### 3.4 Function parameter Channel “N”



**Fig2:** “Channel N” parameter(N=A,B,C...) windows

In the parameter windows of the “Channel N”, can setup some common functions. Through functional selection and download the database to the device, and device will work in accordance with the selected function.

#### ---Channel “N(N=A,B,C...)” work mode:

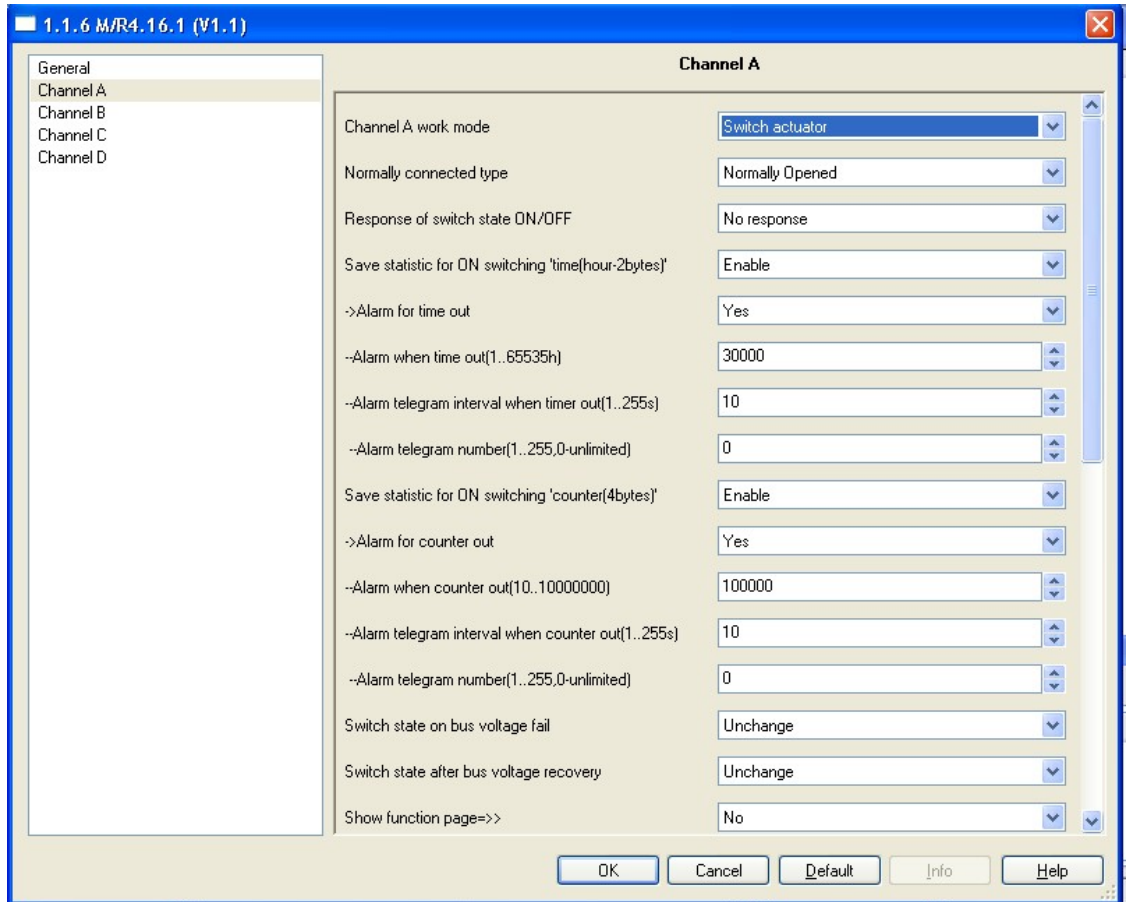
The function of the output “N” work mode can be selected with three parameter.

Options: **Switch Actuator**  
**Heating Actuator**  
**Inactivated**

If select “**Inactivated**”, The channel “N” function will be invalid, otherwise work in the other two modes.



### 3.5 Channel mode “Switch Actuator”



**Fig3:** Switch Actuator windows

More functions setup in this mode, the following section will description detailed of the Switch Actuator mode.

#### ---Normally connected type

This parameter is the choice of the type of access load

Options: **Normally Closed:**  
**Normally Opened**

**Normally Closed:** Access of the load type normally OFF state is closed.

**Normally Opened:** Access of the load type normally OFF state is opened.

#### ---Response of switch state ON/OFF

This parameter is the choice of the switching state feedback

Options: **No response**  
**Always response**

**Only after change**

**No response:** no response switch state.

**Always response:** always response switching state when receive the channel telegram data.

**Only after change:** only response switching state when channel state changed.

**---Save statistic for ON switching 'time(hour-2bytes)'**

Statistics per channel ON time , useful for management and monitoring

Options: **Disable**

**Enable**

**Disable:** Disable Statistics ON time

**Enable:** Enable Statistics ON time

**>>:->Alarm for time out**

Options: **No**

**Yes**

**No:** Not alarm

**Yes:** Alarm

**>>:--Alarm when time out(1..65535h)**

This parameter set the ON time alarm overflow time.

Options: **1..65535h**

**>>:--Alarm telegram interval when time out(1..255s)**

This parameter is set to ON time overflow alarm interval.

Options: **1..255s**

**>>:--Alarm telegram number(1..255,0-unlimited)**

This parameter set the ON time overflow alarm of the number.

Options:**0-unlimited**

**1..255**

**---Save statistic for ON switching 'counter(4bytes)'**

Statistical channel switch ON counter.

Options: **Disable**

**Enable**

**Disable:** Disable Statistics ON counter

**Enable:** Enable Statistics ON counter

**>>:->Alarm for counter out**

Options: **No**  
**Yes**

**No:** Not alarm  
**Yes:** Alarm

**>>:--Alarm when counter our(10..1000000)**

This parameter set the ON alarm overflow time.counter  
 Options: **10..1000000**

**>>:--Alarm telegram interval when counter out(1..255s)**

This parameter is set ON counter overflow alarm interval.  
 Options: **1..255s**

**>>:--Alarm telegram number(1..255,0-unlimited)**

This parameter set the ON counter overflow alarm number.  
 Options:**0-unlimited**  
**1..255**

**---The switch state on bus voltage fail**

When bus voltage failure and the function will be executed. Three choices will be available as following:

Options: **Unchange**  
**ON**  
**OFF**

**Unchange:** The channel switch position unchanged after bus voltage failure

**ON:** The channel position will be switch ON after bus voltage failure

**OFF:** The channel position switch OFF after bus voltage failure

**---The operation of switch after bus voltage recovery**

When power on and the bus voltage recovery, This function will be executed. four choices will be available as following:

Options: **Unchange**  
**Recovery**  
**ON**  
**OFF**

**Unchange:** The channel switch position unchanged after bus voltage recovery.

**Recovery:** After bus voltage recovery, The channel switch position will be back to the state of the power-down previous.

**ON:** The channel position will switch ON after bus voltage recovery.

**OFF:** The channel position will switch OFF after bus voltage recovery.

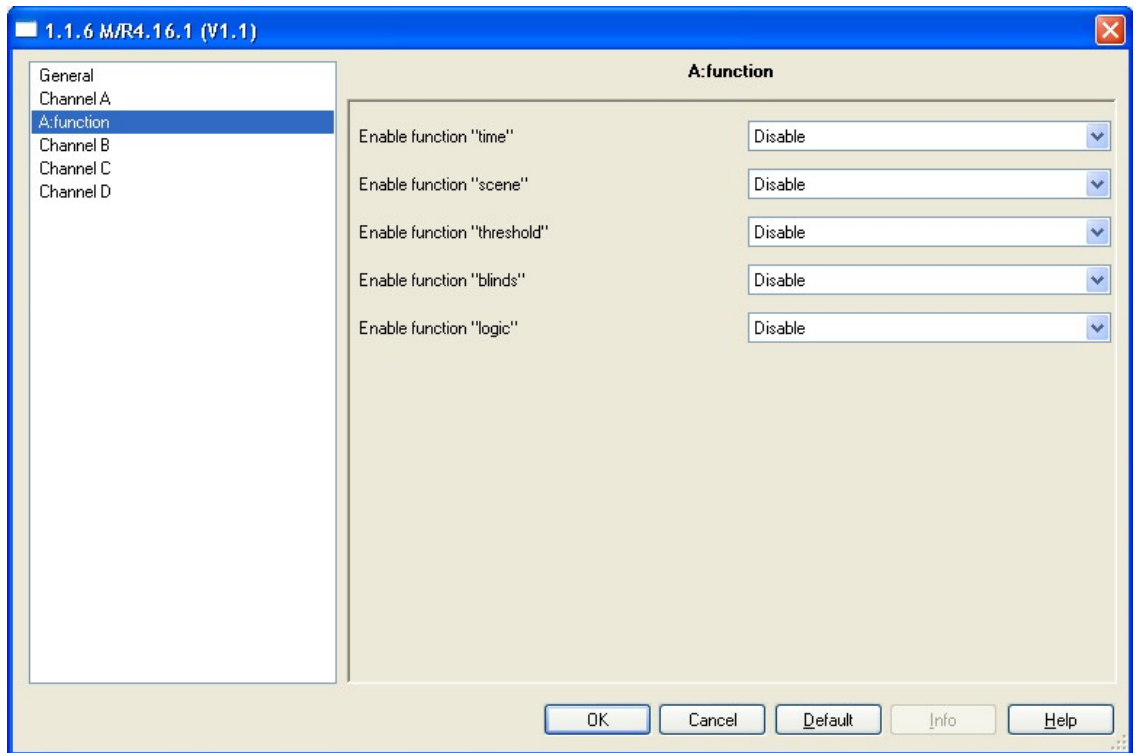
**Show the function page**

If this parameter is activated, and channel function page will be showed. The function page Include Time, Scene, Threshold, Blinds and Logic. Details see the following sections.

**3.5.1 Channel function**

The following will describe detail the functions parameter setup of the channel.

**3.5.2 Channel function parameter**



**Fig4:** Channel function windows

In normal case, The each channel function is disabled, If enabled and the channel function will be valid.

**---Enable function “time”**

If set to Enable, and the time function will be enable .

Options: **Disable**  
**Enable**

**Disable:** disable time function.

**Enable:** enable time function.

**---Enable function "scene"**

If set to Enable, and the scene function will be enable.

Options: **Disable**  
**Enable**

**Disable:** disable scene function.

**Enable:** enable scene function.

**---Enable function "threshold"**

If set to Enable, the Threshold function will be enable.

Options: **Disable**  
**Enable**

**Disable:** disable Threshold function.

**Enable:** enable Threshold function.

**---Enable function "blinds"**

If set to Enable, the Blinds function will be enable.

Options: **Disable**  
**Enable**

**Disable:** Disable Blinds function.

**Enable:** Enable Blinds function.

**---Enable function "logic"**

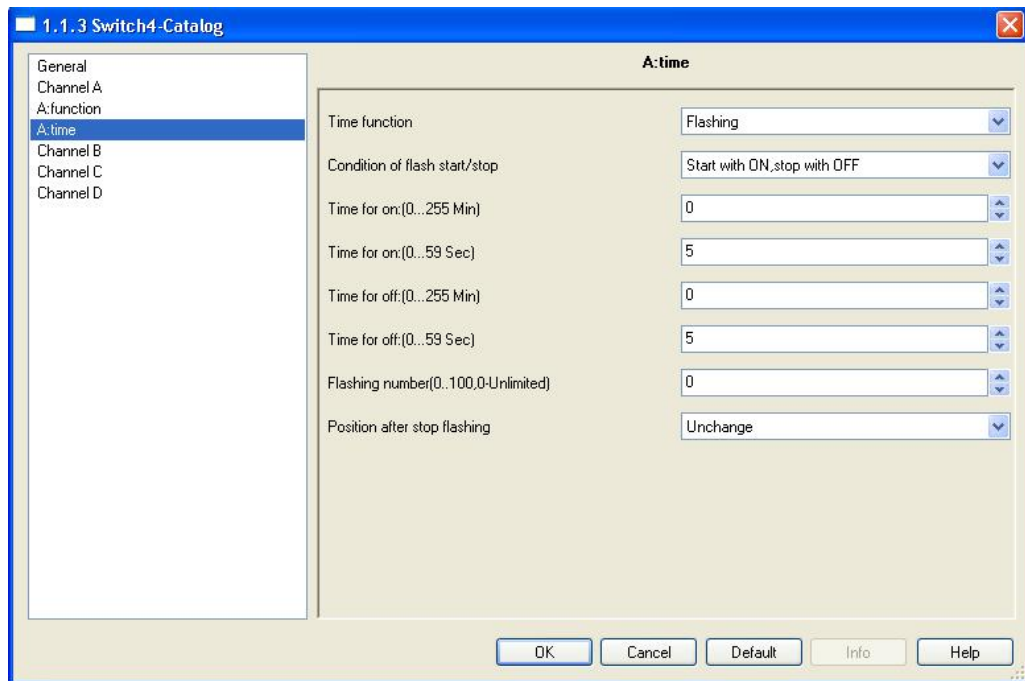
If set to Enable, the Logic function will be Enable.

Options: **Disable**  
**Enable**

**Disable:** Disable Logic function.

**Enable:** Enable Logic function.

### 3.5.3 Channel function “time”

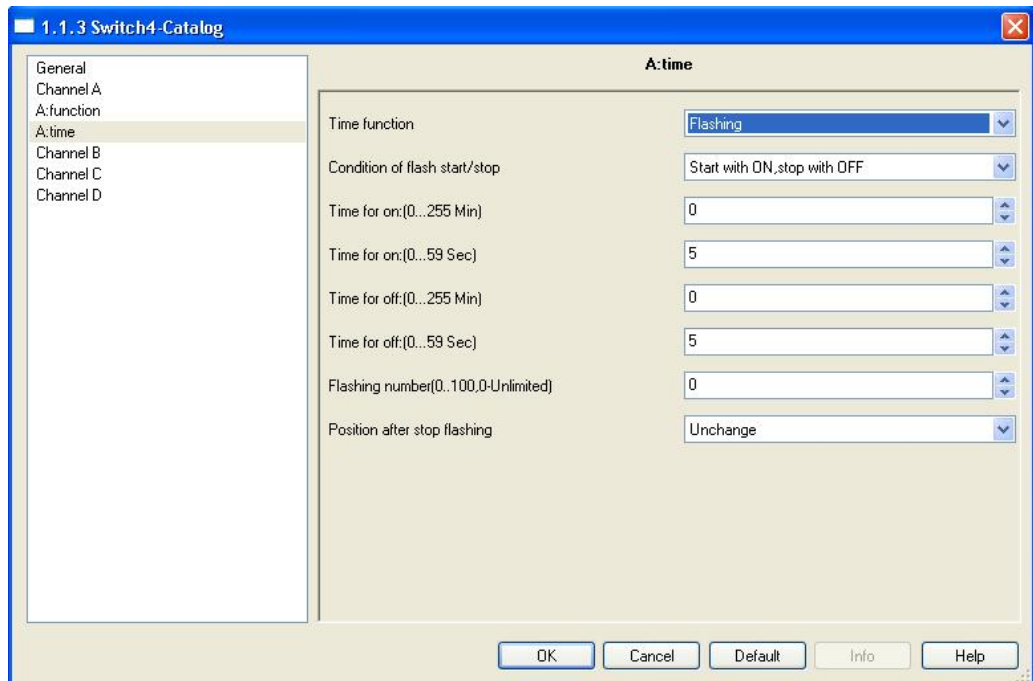


**Fig5:** Time function windows

The Time function include three work mode as following:

Options:**Flashing**  
**Staircase lighting**  
**ON/OFF delay**

### 3.5.3.1 Channel function “Time-Flashing”



**Fig6:** Time-Flashing function windows

Switch will flashing between ON and OFF in this mode.

#### Condition of flash start/stop

Three Control mode for this function .

Options:**Start with ON, stop with OFF**

**Start with OFF, stop with ON**

**Always flash, start with ON/OFF**

**Start with ON, stop with OFF:** Start flashing with ON and stop flashing with OFF.

**Start with OFF, stop with ON:** Start flashing with OFF and stop flashing with ON.

**Always flash, start with ON/OFF:** Start flashing with ON or OFF.

---**Time for on:(0...255 Min)**

Duration minutes in the ON state.

---**Time for on:(0...59 Sec)**

Duration seconds in the ON state.

---**Time for off:(0...255 Min)**

Duration minutes in the OFF state.



**---Time for off:(0...59 Sec)**

Duration seconds in the OFF state

**---Flashing number(1..100,0-Unlimited)**

The number of flashing, range between 0 and 100. 0 is unlimited.

**---Position after stop flashing**

Switch position after stop flashing by overflow counter ,include three parameters.

Options: **Unchange**

**ON**

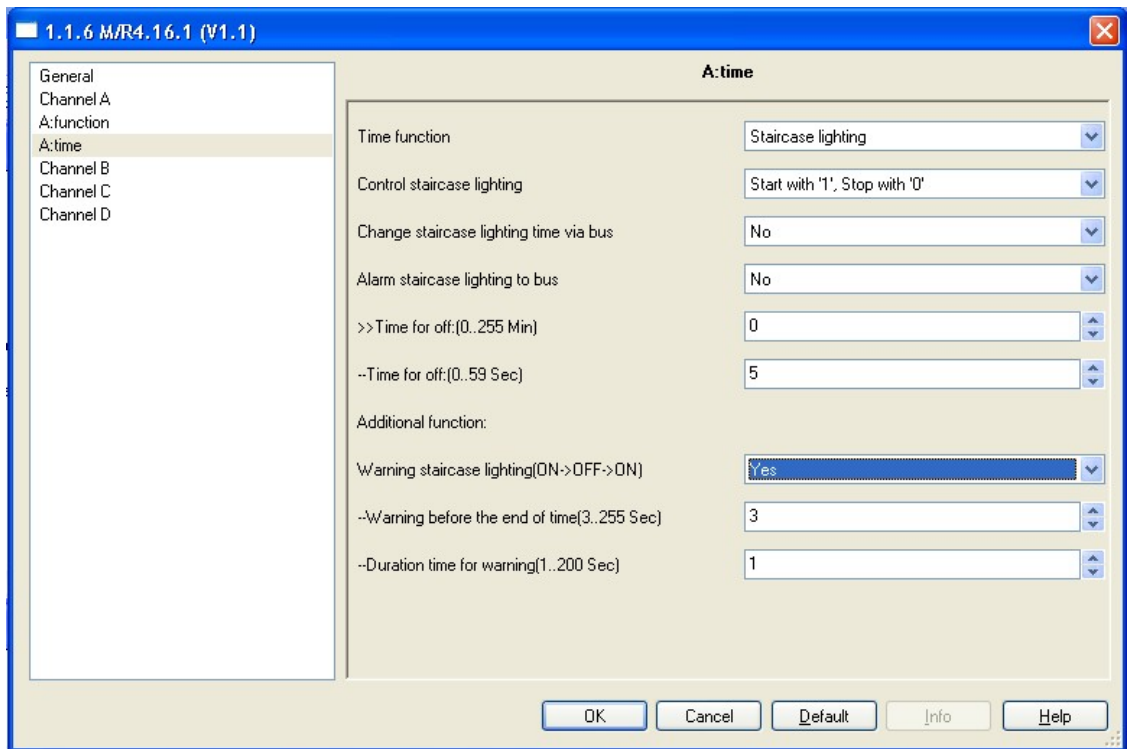
**OFF**

**Unchange:** The switch state position unchange after flashing counter overflow.

**ON:** The switch state position set to ON after flashing counter overflow.

**OFF:** The switch state position set to OFF after flashing counter overflow.

**3.5.3.2 Channel function “time-Staircase lighting”**



**Fig7:** Time-Staircase lighting function windows

For staircase application

**Control staircase lighting**

Control staircase light with three mode.

Options:**Start with '1', Stop with '0'**  
**Start with '1', Invalid with '0'**  
**Start with '1'/'0' , Can't Stop**

**Start with '1', Stop with '0'**: when received telegram value is '1',The staircase light start and switching ON.when received telegram value is '0' or time out,switching OFF and stop staircase light.

**Start with '1', Invalid with '0'**: when received telegram value is '1',The staircase light start and switching ON.Invalid with telegram value '0'.

**Start with '1'/'0' , Can't Stop**: when received telegram value is '1'or'0',The staircase light start and switching ON

### ---Change staircase lighting time via bus

Options: **NO**  
**YES**

**NO**: Can't change staircase lighting delay off time via bus , only can be set by ets.

**YES**:Allow change staircase lighting delay off time via bus by user.

### ---Alarm staircase lighting to bus

Options: **NO**  
**YES**

**NO**: Not Alarm.

**YES**: Alarm staircase light.

### ---Time for off:(0...255 Min)

Duration minutes of the staircase lighting delay off time.

### ---Time for off:(0...59 Sec)

Duration seconds of the staircase lighting delay off time.

### ---Warning staircase lighting(ON->OFF->ON)

Options: **NO**  
**YES**

**NO**: Not allow alarm

**YES**: Allow alarm.

>>:-- Warning before the end of time(3..255 Sec)

Options: 2..255 seconds

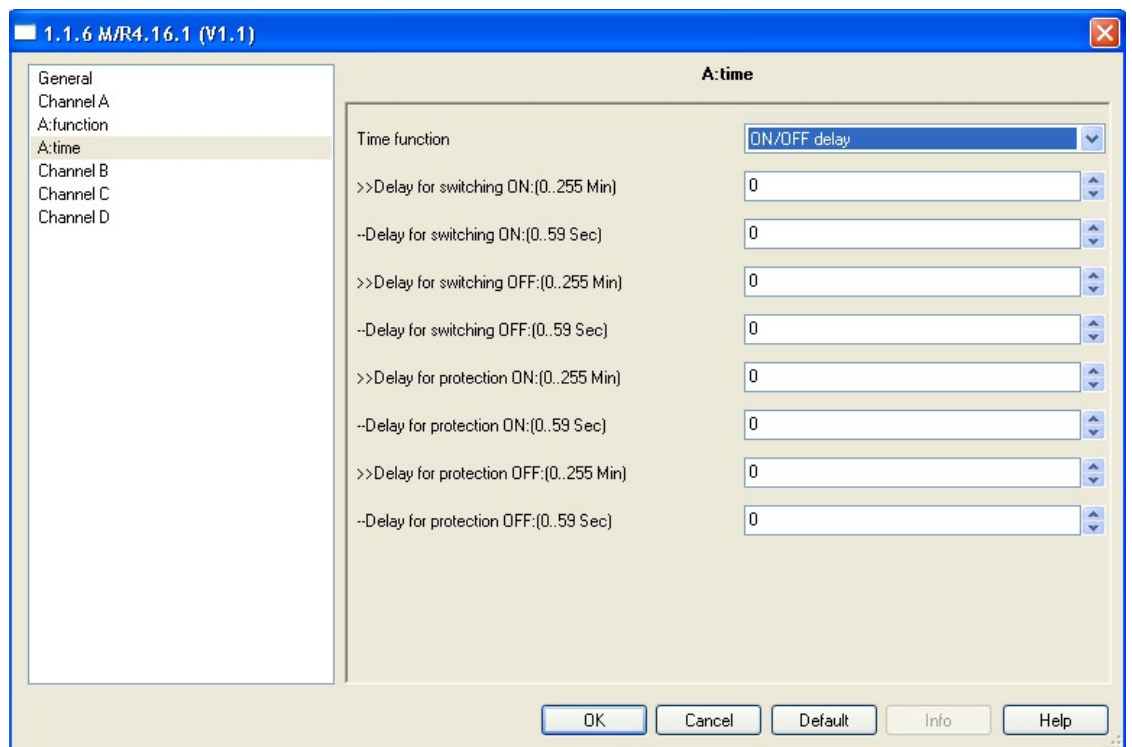
Note: If this time out range of the total staircase light time,then the warning function is invalid.

>>:-- Duration time for warning(1..200 Sec)

Options: 1..200 seconds

Note: If this time out range of the total staircase light time,then the warning function is invalid.

### 3.5.3.3 Channel function “time-ON/OFF delay”



**Fig8:** Time-ON/OFF delay function windows

This function is including switch ON delay, switch OFF delay,protect ON delay and protect ON delay. Some special equipment need time protection for ON or OFF.

---Delay for switching ON:(0..255 Min)

Duration minutes of the ON delay

---Delay for switching ON:(0...59 Sec)

Duration seconds of the ON delay.

---Delay for switching OFF:(0...255 Min)

Duration minutes of the OFF delay.

**---Delay for switching OFF:(0...59 Sec)**

Duration seconds of the OFF delay.

**---Delay for protection ON:(0..255 Min)**

Duration minutes of the protected ON delay.

**---Delay for protection ON:(0...59 Sec)**

Duration seconds of the protected ON delay.

**---Delay for protection OFF:(0..255 Min)**

Duration minutes of the protected OFF delay.

**---Delay for protection OFF:(0...59 Sec)**

Duration seconds of the protected OFFdelay.

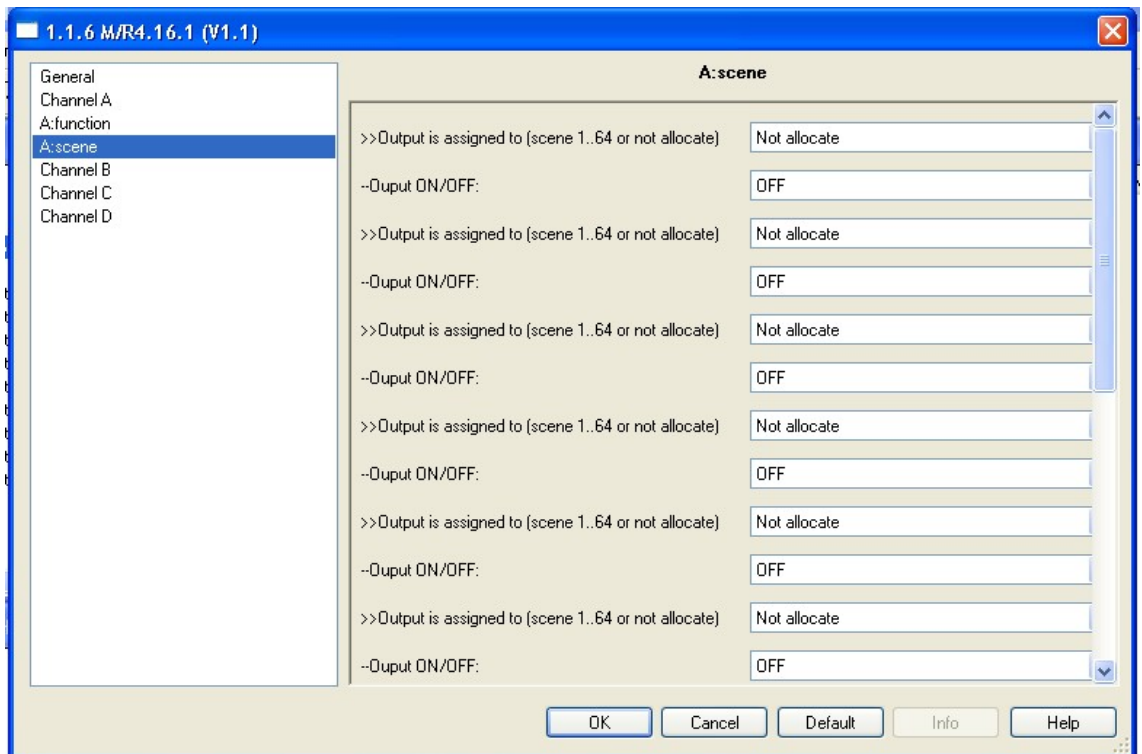
**Note:****1-Protection ON delay**

If turn off the light, and turn on the light immediately. The protection ON delay time will be valid.

**2-Protection OFF delay**

If turn oN the light, and turn oFF the light immediately. The protection OFF delay time will be valid.

3.5.4 Channel function “scene”



**Fig9:** Scene function windows

10 scenes can be configured for each channel. Each scene can be set to ON or OFF.

The scene is called by receive a value of telegram from the bus which the value of the telegram(bit 0-6) equal a scene number, The bit seven of value of the telegram must 0 .

The scene is stored by receive a value of telegram from the bus which the value of the telegram(bit 0-6) equal a scene number, The scene state is the current switch state. The bit seven of value of the telegram must 1

**---Output is assigned to (scene 1...64 or not allocate)**

- Options: **not allocate**  
**Scene NO.01**  
**Scene NO.02**  
 .....  
**Scene NO.64**

The scene number is between 1 and 64, the value is between 0 and 63 or not allocate.

**---Output ON/OFF:**

Channel switch ON or OFF

Options: **ON**  
**OFF**

**ON:** Channel switch to ON.

**OFF:**Channel switch to OFF.

3.5.5.1 Channel function “1byte threshold”

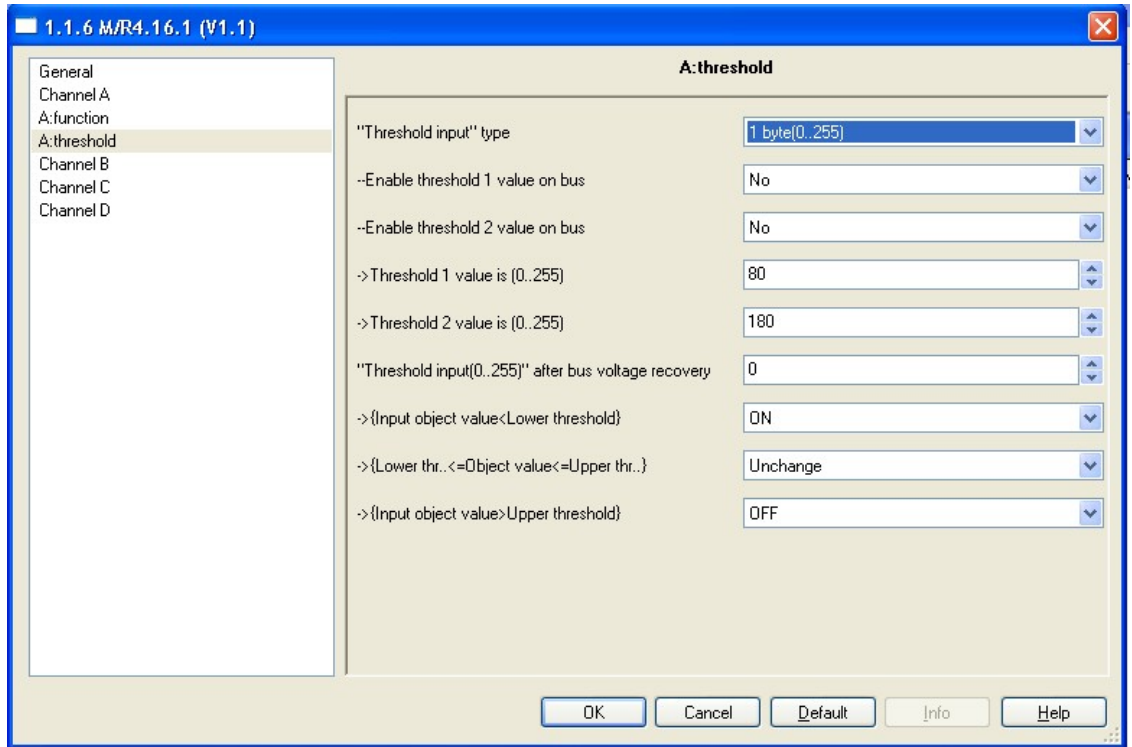


Fig10: 1byte Threshold type function windows

The threshold include two threshold value are the threshold1 and threshold2. The threshold1 and threshold2 can be set between 0 and 255. The switch state changed according to the input threshold value of receiving from bus , it has three ways to compare with the value of threshold.

---Enable change threshold 1 over bus:

Options: **YES**  
**NO**

**NO:** Do not allow change threshold1 via bus.  
**YES:** Allow change threshold1 via bus.

---Enable change threshold 2 over bus:

Options: **YES**  
**NO**

**NO:** Do not allow change threshold2 via bus.  
**YES:** Allow change threshold2 via bus.



**---Threshold 1 value is (0...255)**

Set threshold 1 value between 0 and 255. Default is 80

Options:**0..255**

**---Threshold 2 value is (0...255)**

Set threshold 2 value between 0 and 255. Default is 180

Options:**0..255**

**---“Threshold input(0..255)” after bus voltage recovery**

The default input threshold value is set after power on recovery

Options:**0..255**

**---{Input object value<lower threshold}**

If the value of receiving telegram from bus lower than the minimum threshold value, the switch will action according to below option ( ON or OFF or no action)

Options: **Unchange**

**ON**

**OFF**

**Unchange:** The channel switch position no change

**ON:** The channel switch position set to ON.

**OFF:** The channel switch position set to OFF

**---{Lower threshold<=Object vlue<=Upper threshold}**

If the value of receiving telegram from bus between Lower threshold and Upper threshold, the switch will action according to below option ( ON or OFF or no action)

Options: **Unchange**

**ON**

**OFF**

**Unchange:** The channel switch position no change.

**ON:** The channel switch position set to ON.

**OFF:** The channel switch position set to OFF

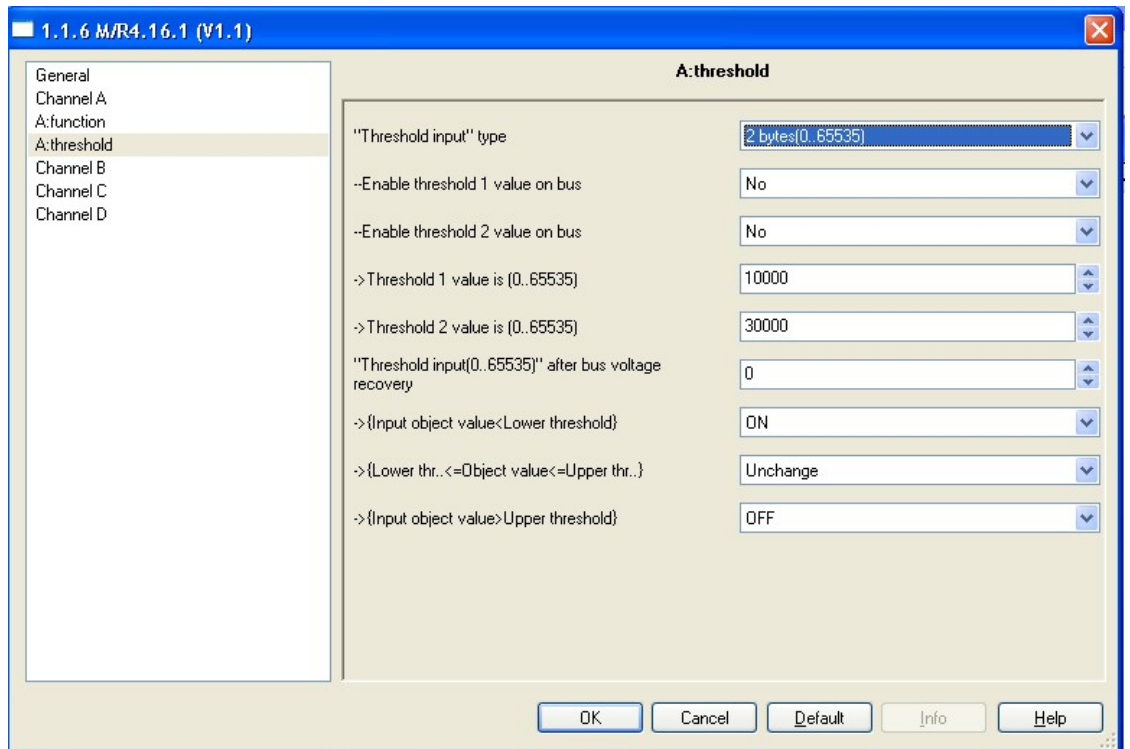
**---{Input object value>upper threshold}**

If the value of receiving telegram from bus more than the upper threshold value, the switch will action according to below option ( ON or OFF or no action)

Options: **Unchange**  
**ON**  
**OFF**

**Unchange:** The channel switch position no change.  
**ON:** The channel switch position set to ON.  
**OFF:** The channel switch position set to OFF

### 3.5.5.2 Channel function “2bytes threshold”



**Fig11:** 2byte Threshold type function windows  
 2bytes Threshold function is same as the 1byte threshold function.

**---Enable change threshold 1 over bus:**

Options: **YES**  
**NO**

**NO:** Do not allow change threshold1 via bus.

**YES:** Allow change threshold1 via bus.

**---Enable change threshold 2 over bus:**

Options: **YES**  
**NO**

**NO:** Do not allow change threshold2 via bus.

**YES:** Allow change threshold2 via bus.

**---Threshold 1 value is (0...65535)**

Set threshold 1 value between 0 and 65535. Default is 80

Options:**0.. 65535**

**---Threshold 2 value is (0... 65535)**

Set threshold 2 value between 0 and 65535.Default is 180

Options:**0.. 65535**

**---“Threshold input(0.. 65535)” after bus voltage recovery**

The default input threshold value is set after power on recovery

Options:**0.. 65535**

**---{Input object value<lower threshold}**

If the value of receiving telegram from bus lower than the minimum threshold value, the switch will action according to below option ( ON or OFF or no action)

Options: **Unchange**  
**ON**  
**OFF**

**Unchange:** The channel switch position no change

**ON:** The channel switch position set to ON.

**OFF:** The channel switch position set to OFF

**---{Lower threshold<=Object vlue<=Upper threshold}**

If the value of receiving telegram from bus between Lower threshold and Upper threshold, the switch will action according to below option ( ON or OFF or no action)

Options: **Unchange**

ON  
OFF

**Unchange:** The channel switch position no change.  
**ON:** The channel switch position set to ON.  
**OFF:** The channel switch position set to OFF

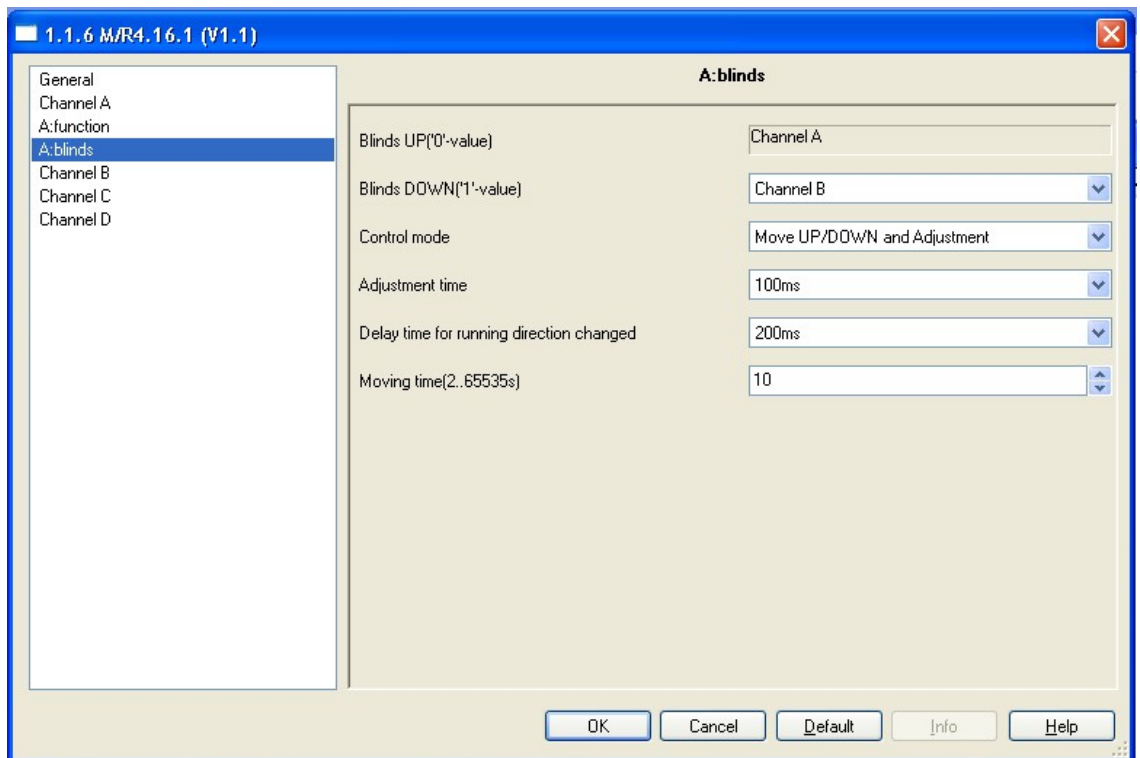
**---{Input object value>upper threshold}**

If the value of receiving telegram from bus more than the upper threshold value, the switch will action according to below option ( ON or OFF or no action)

Options: **Unchange**  
**ON**  
**OFF**

**Unchange:** The channel switch position no change.  
**ON:** The channel switch position set to ON.  
**OFF:** The channel switch position set to OFF

**3.5.6 Channel function “blinds”**



**Fig12:** Blinds function windows

The blinds function need combination two channels work together. the first channel control UP/Adjust/Stop of Blind and the second channel control DOWN/Adjust/Stop of blinds. It runs by receiving telegram value '0'/'1' from the bus and stop when timeout or receiving adjustment object telegram value.

#### ---Blinds UP('0'-value)

The first channel for blinds UP or adjustment.

Options: **channel "N"(N=current channel)**

This channel output control blinds UP or adjustment.

#### ---Blinds DOWN('1'-value)

It's can select another channel as second channel for blinds DOWN

Options: **channel "M"(M= another channels )**

e.g. If first channel is "channel A" and the maximum channel number is 4 of the device, can only select channel B or channel C or channel D for second channel

#### Control mode

Options: **Move UP/DOWN and Adjustment**  
**Move UP/DOWN**

**Move UP/DOWN and Adjustment:** This selection can control the blinds UP or DOWN,can adjust the blinds,too.

**Move UP/DOWN:** This selection can only control the blinds UP or DOWN

#### ---Adjustment time

This parameter set blinds adjustment time. The maximum time 5 seconds,Minimum time is 50ms

#### ---Delay time for running direction changed

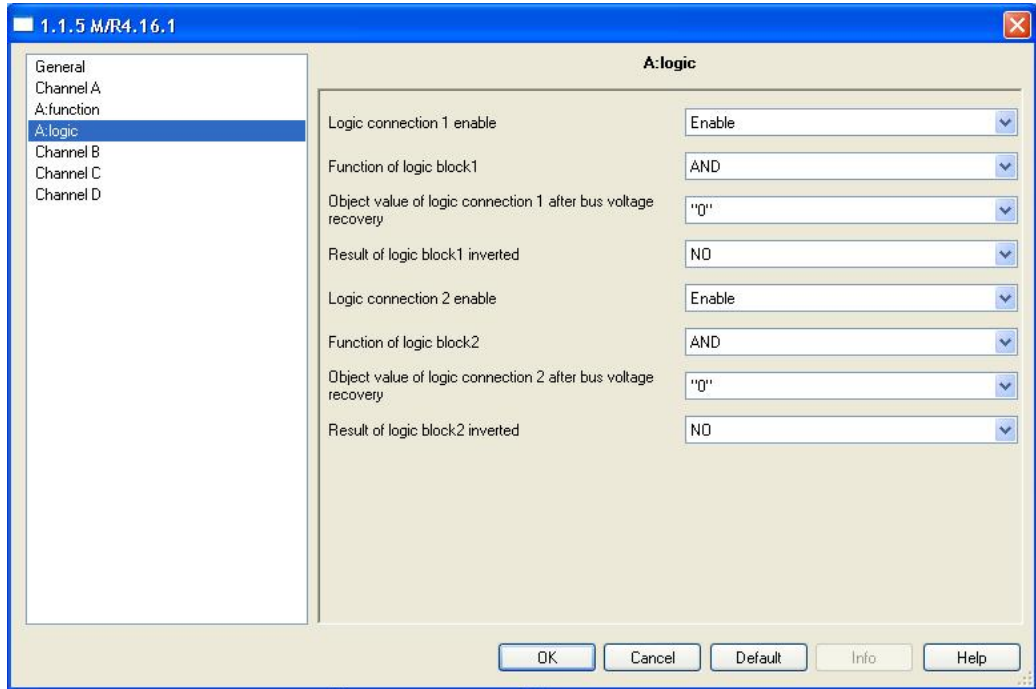
When running direction changed,Delay for inertia. The maximum time 5 seconds,Minimum time is 50ms

#### ---Moving time(2..65535s):

This parameter set blinds moving need to take total time.

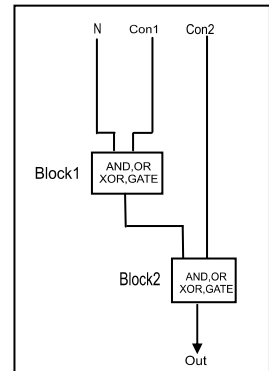
Options:**0.. 65535s**

3.5.7 Channel function “logic”



**Fig13:** Logic function windows

The logic functions block show at right side graphic , it include two logic block in side , logic block 1 has two input which are “N” and connect 1 (“Con1”), the output of logic block 1 is connected to input of logic block 2 . logic block 2 has two input which are connect2(“Con2”) and output of logic block1 , the output of logic block2 is “Out” “Logic connection 1” and “Logic connect ion 2”. Both of logic block 1 and 2 allow select “AND”, “OR”, “XOR”, “GATE” logic by user



--- **logic connection1 enable**

Enable this parameter, the logic connecton1 in active state. The logic block 1 will no function by disable connect1(“Con1”) , means the “N” connect to logic block 2 directly

Options: **Disable**  
**Enable**

**Disable:** disable logic connection1  
**Enable:** enable logic connection1

--- **Function of logic block1**

This logic block allow select as “AND” or “OR” or “XOR” or “GATE” for Boolean calculation by user

Options: **AND**  
**OR**  
**XOR**  
**GATE**

**AND:** Boolean calculation according to “AND” rule

**OR:** Boolean calculation according to “OR” rule

**XOR:** Boolean calculation according to “XOR” rule

**GATE:** “N” pass through logic block1 to logic block 2 by the value of “Con1” set to 1 .

“N” cannot pass through logic block1 to logic block 2 until the value of “Con1” is setting to 1 , the output of logic block1 keep the state as before

**---Object value of logic connection 1 after bus voltage recovery**

The value of the parameter of logic connection1 initial by bus voltage recovery .

Options: **0**  
**1**

**0:** Initialization logic connecttion1 value to 0.

**1:** Initialization logic connection1 value to 1.

**---Result of logic block 1 inverted**

setting this parameter to YES, the output of connection 1 will be inverted.

Options: **NO**  
**YES**

**NO:** Result of block not inverted.

**YES:** Result of block inverted.

**--- logic connection2 enable**

Enable this parameter, the logic connecton2 in active state. The logic block 2 will no function by disable connect2 (“Con2”) , means the output of logic block 1 pass through “Out” directly

Options: **Disable**  
**Enable**

**Disable:** disable logic connection2

**Enable:** enable logic connection2

--- **Function of logic block2**

This logic block allow select as “AND” or “OR” or “XOR” or “GATE” for Boolean calculation by user

Options: **AND**  
**OR**  
**XOR**  
**GATE**

**AND:** Boolean calculation according to “AND” rule

**OR:** Boolean calculation according to “OR” rule

**XOR:** Boolean calculation according to “XOR” rule

**GATE:** “Out” Keep state as before when value of “Con2” set to 0 .  
Output of logic block1 pass through to “Out” of logic block when value of “Con2” set to 1 .

---**Object value of logic connection 2 after bus voltage recovery**

The value of the parameter of logic connection2 initial by bus voltage recovery .

Options: **0**  
**1**

**0:** Initialization logic connecttion2 value to 0.

**1:** Initialization logic connection2 value to 1.

---**Result of logic block 2 inverted**

setting this parameter to YES, the output of connection2 will be inverted.

Options: **NO**  
**YES**

**NO:** Result of block not inverted.

**YES:** Result of block inverted.



3.5.8 Channel “Heating Actuator”

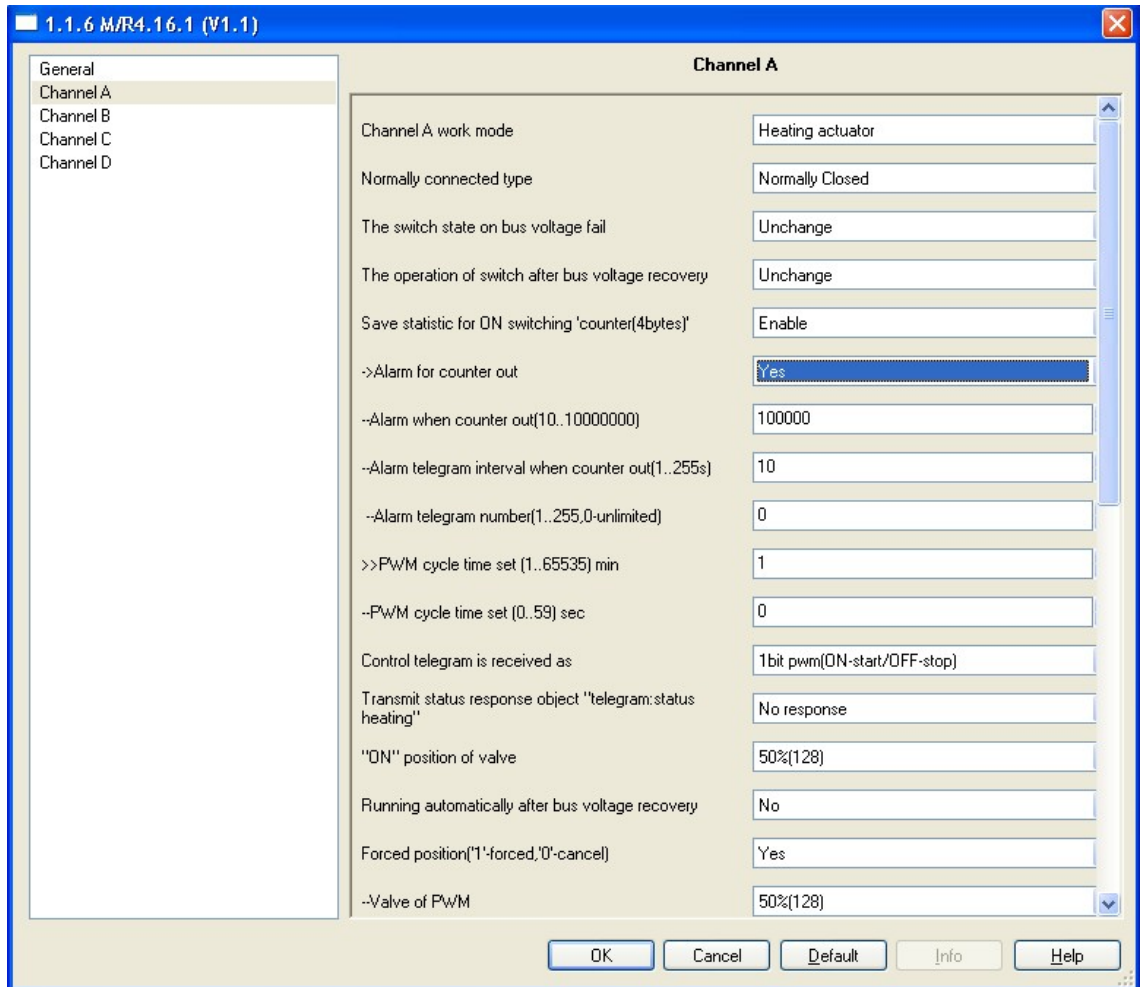


Fig14: Heating Actuator windows

The channel will work at PWM mode. The PWM control by 1bit or 1byte.

--- Normally connected type

Options: **Normally Closed**  
**Normally opened**

**Normally Closed:** Normally close heating.  
**Normally opened:** Normally open heating.

---The switch state on bus voltage failure:  
It has three option can be set by user

Options: **Unchange**  
**ON**

**OFF**

**Unchange:** The channel switch position unchanged after bus voltage failure

**ON:** The channel position will switch ON after bus voltage failure

**OFF:** The channel position will switch OFF after bus voltage failure

**---The operation of switch after bus voltage recovery**

It has four option for bus voltage recovery also as below

Options: **Unchange**

**Recovery**

**ON**

**OFF**

**Unchange:** The channel switch position unchanged after bus voltage recovery.

**Recovery:** After bus voltage recovery, the channel switch position will come back to the state of the power-down previous.

**ON:** The channel switch position will be set to ON after bus voltage recovery.

**OFF:** The channel switch position will be set to OFF after bus voltage recovery.

**---Save statistic for ON switching 'counter(4bytes)'**

Statistical channel switch ON counter.

Options: **Disable**

**Enable**

**Disable:** Disable Statistics ON counter

**Enable:** Enable Statistics ON counter

**>>:->Alarm for counter out**

Options: **No**

**Yes**

**No:** Not alarm

**Yes:** Alarm

**>>:--Alarm when counter our(10..10000000)**

This parameter set the ON alarm overflow time.counter

Options: **10..10000000**

**>>:--Alarm telegram interval when counter out(1..255s)**

This parameter is set ON counter overflow alarm interval.

Options: **1..255s**

**>>:--Alarm telegram number(1..255,0-unlimited)**

This parameter set the ON counter overflow alarm number.

Options:**0-unlimited**

**1..255**

**---PWM cycle time set (1...65535) min**

Options:**1...65535m**

This cycle time is set Minimum is 1 minutes

**---PWM cycle time set (0...59) sec**

Options:**0..59s**

This cycle time is set in seconds

**---Control telegram is received as**

Type of control can be control as 1bit or 1byte.

Options: **1bit PWM(1-start/0-stop)**

**1byte(255-switch ON/0-switch OFF/ other valve)**

**1bit PWM(1-start/0-stop):** The PWM start and switch ON by the value of receiving telegram "1" , and stop by "0".

**1byte(255-ON/0-OFF/other valve):** the switch ON always by the value of receiving telegram "255", the switch OFF by the value of receiving telegram "0". The PWM runs and pulse width of PWM is set according to the value of receiving telegram (1 to 254 )

**---transmit status response object "telegram: status heating"**

It has three option for the channel state response setting

Options: **No response**

**Always response**

**Only after changed**

**No response:** no response switch state.

**Always response:** always response switch state of the channel when receive the channel telegram data.

**Only after changed:** only response switch state of the channel when change state changed.

**---"ON" position of valve**

This parameter will set the valve of the PWM (pulse width).

Options: **0%(OFF)**  
**10%(26)**  
**20%(51)**  
**30%(77)**  
**40%(102)**  
**50%(128)**  
**60%(153)**  
**70%(179)**  
**80%(204)**  
**90%(230)**  
**100%(ON)**

**---Running automatically after bus voltage recovery**

Options: **No**  
**Defined valve**  
**Recovery**

**No:** PWM not running automatic power on.

**Defined valve:** PWM running by set valve.

**Recovery:** PWM automatic running by last save valve

**---Forced position('1'-forced,'0'-cancel)**

Options: **No**  
**Yes**

**No:**No need force run.

**Yes:**Need forced run.

**>>:--Valve of PWM**

The valve PWM of forced position.

**>>:--Forced cancel operation**

Options: **Stop heating**  
**Return to normally heating valve**

**Stop heating:**When cancel forced operation,and stop heating.

**Return to normally heating valve:**When cancel forced operation,and return to normally heating valve.

## 4-Communication objects description

In this section will introduce the communication objects, The objects will show by setting the function enable .

**Note:** In following sections the **N=A,B,C...**

### 4.1 Objects “General” and “Output N”

| Number | Name    | Object Function | Descript... | Group Addresses | Length | C | R | W | T | U |
|--------|---------|-----------------|-------------|-----------------|--------|---|---|---|---|---|
| 0      | General | Send cycles     |             |                 | 1 bit  | C | R | - | T | - |
| 10     | Ouput A | Channel output  |             |                 | 1 bit  | C | - | W | - | U |
| 30     | Ouput B | Channel output  |             |                 | 1 bit  | C | - | W | - | U |
| 50     | Ouput C | Channel output  |             |                 | 1 bit  | C | - | W | - | U |
| 70     | Ouput D | Channel output  |             |                 | 1 bit  | C | - | W | - | U |

| NO. | Object name | Function    | Flags | Data type                 |
|-----|-------------|-------------|-------|---------------------------|
| 0   | General     | Send cycles | C R T | EIS1<br>DPT 1.003<br>1bit |

This communication object is always active and valid. invert the value send telegram to bus in next frame. e.g. last telegram value is “1”, the next telegram value is “0”

**Table 3.**General object

| NO.      | Object name | Function       | Flags | Data type                 |
|----------|-------------|----------------|-------|---------------------------|
| 10,30... | Output N    | Channel output | C W U | EIS1<br>DPT 1.001<br>1bit |

These communication objects of the channel output used for ON/OFF an channel, the switch output ON when the object receive the value is “1”. the switch output OFF when the object receive the value is “0”

**Table 4** Output objects

### 4.2 All objects with channel “N”

| Number | Name     | Object Function                | Descrip... | Group Add... | Length | C | R | W | T | U |
|--------|----------|--------------------------------|------------|--------------|--------|---|---|---|---|---|
| 0      | General  | Send cycles                    |            |              | 1 bit  | C | R | - | T | - |
| 10     | Output A | Channel output                 |            |              | 1 bit  | C | - | W | - | U |
| 11     | Output A | Always response switch status  |            |              | 1 bit  | C | R | - | T | - |
| 12     | Output A | R/W statistic for time         |            |              | 2 Byte | C | R | W | T | U |
| 13     | Output A | Alarm for ON time out          |            |              | 1 bit  | C | R | - | T | - |
| 14     | Output A | R/W statistic for counter      |            |              | 4 Byte | C | R | W | T | U |
| 15     | Output A | Alarm for counter out          |            |              | 1 bit  | C | R | - | T | - |
| 17     | Output A | Staircase light                |            |              | 1 bit  | C | - | W | - | U |
| 18     | Output A | Change staircase lighting time |            |              | 2 Byte | C | - | W | - | U |
| 19     | Output A | Alarm staircase lighting       |            |              | 1 bit  | C | R | - | T | - |
| 20     | Output A | Scene(8bit)                    |            |              | 1 Byte | C | - | W | - | U |
| 21     | Output A | Threshold input                |            |              | 1 Byte | C | - | W | - | U |
| 22     | Output A | Change threshold 1             |            |              | 1 Byte | C | - | W | - | U |
| 23     | Output A | Change threshold 2             |            |              | 1 Byte | C | - | W | - | U |
| 24     | Output A | Moving for Blinds(0-UP,1-DOWN) |            |              | 1 bit  | C | - | W | - | U |
| 25     | Output A | Adjust/Stop for Blinds         |            |              | 1 bit  | C | - | W | - | U |
| 26     | Output A | Logic connection 1             |            |              | 1 bit  | C | - | W | - | U |
| 27     | Output A | Logic connection 2             |            |              | 1 bit  | C | - | W | - | U |
| 16     | Output A | Flashing                       |            |              | 1 bit  | C | - | W | - | U |

### 4.2.1 Objects“Response”

| NO. | Object name | Function  | Flags | Data type                 |
|-----|-------------|---|-------|---------------------------|
| 11  | Output N    | No response<br>/Always response<br>/Only after change | C R T | EIS1<br>DPT 1.001<br>1bit |

This communication object used response the channel N status, If channel status is ON,then the response status value is “1”, Otherwise the status value is “0”

Table 5 Response

### 4.2.2 Objects “R/W statistics for time”

| NO. | Object name | Function                       | Flags     | Data type                    |
|-----|-------------|--------------------------------|-----------|------------------------------|
| 12  | Output N    | Read/write statistics for time | C R W T U | EIS10<br>DPT 7.007<br>2bytes |

This communication object is used for statistics ON time of the channel “N”. it can be read/wrote via bus by setting this function activity

Table 6 Read/write statistics ON time (2byte)

## 4.2.3 Objects “Alarm for ON time out”

| NO. | Object name | Function              | Flags | Data type                 |
|-----|-------------|-----------------------|-------|---------------------------|
| 13  | Output N    | Alarm for ON time out | C R T | EIS1<br>DPT 1.005<br>1bit |

This communication object is used for alarm when ON time out set range.

Table 7 Alarm statistics ON time (1bit)

## 4.2.4 Objects “R/W statistics counter”

| NO. | Object name | Function                          | Flags     | Data type            |
|-----|-------------|-----------------------------------|-----------|----------------------|
| 14  | Output N    | Read/write statistics for counter | C R W T U | DPT 12.001<br>4bytes |

This communication object is used for statistics ON counter of the channel “N”. it can be read/wrote via bus by setting this function activity

Table 8 Read/write statistics ON counter (4bytes)

## 4.2.5 Objects “Alarm for ON counter out”

| NO. | Object name | Function                 | Flags | Data type                 |
|-----|-------------|--------------------------|-------|---------------------------|
| 15  | Output N    | Alarm for ON counter out | C R T | EIS1<br>DPT 1.005<br>1bit |

This communication object is used for alarm when ON counter out set range.

Table 9 Alarm statistics ON counter (1bit)

## 4.2.6 Objects “Flashing”

| NO. | Object name | Function | Flags | Data type                 |
|-----|-------------|----------|-------|---------------------------|
| 16  | Output N    | Flashing | C W U | EIS1<br>DPT 1.001<br>1bit |

This communication object is used for start or stop switch flashing.

Table 10 Flashing

**4.2.7 Objects “Staircase light”**

| NO.   | Object name | Function        | Flags | Data type                 |
|---|-------------|-----------------|-------|---------------------------|
| 17  | Output N    | Staircase light | C W U | EIS1<br>DPT 1.001<br>1bit |
| This communication object is used for start or stop staircase light |             |                 |       |                           |

**Table 11** Staircase light**4.2.8 Objects“Change staircase lighting time”**

| NO.  | Object name | Function                       | Flags | Data type                   |
|--|-------------|--------------------------------|-------|-----------------------------|
| 18   | Output N    | Change staircase lighting time | C W U | EIS10<br>DPT 7.005<br>2byte |
| This communication object is used to modify the staircase lighting running time. allow modify staircase lighting time via bus by setting this function activity. |             |                                |       |                             |

**Table 12** Change staircase light running time(2byte)**4.2.9 Objects “Alarm staircase lighting”**

| NO.   | Object name | Function                 | Flags | Data type                 |
|---|-------------|--------------------------|-------|---------------------------|
| 19  | Output N    | Alarm staircase lighting | C R T | EIS1<br>DPT 1.005<br>1bit |
| This communication object is used to alarm the staircase lighting. If the function is activated, the staircase lighting start or stop ,the communication object will alarm via bus. channel “N” is ON alarm “1”, Otherwise alarm “0’. |             |                          |       |                           |

**Table 13** Alarm staircase light



4.2.10 Objects “Scene”

| NO. | Object name | Function    | Flags | Data type                    |
|-----|-------------|-------------|-------|------------------------------|
| 20  | Output N    | Scene(8bit) | C W U | EIS14<br>DPT 18.001<br>1byte |

This communication object is used to control the scene. The scene control see following explain:

Telegram value: 

|   |   |   |   |   |   |   |   |
|---|---|---|---|---|---|---|---|
| C | R | N | N | N | N | N | N |
|---|---|---|---|---|---|---|---|

C: 0-Call scene  
 1-Store scene(If scene allocated and the scene is the current switch state)

R: Reserved

N: Scene NO.(bin:000000...111111=NO.1...64)

e.g: **Hexadecimal**

- 00h-----call scene 1 (If scene allocated)
- 01h-----call scene 2 (If scene allocated)
- 3Fh-----call scene 64 (If scene allocated)
  
- 80h-----store scene 1 (If scene allocated)
- 81h-----store scene 2 (If scene allocated)
- BFh-----store scene 64 (If scene allocated)

**Table 14** Scene(8bits)

## 4.2.11 Objects “Threshold”

| NO.   | Object name | Function              | Flags | Data type   |
|---|-------------|-----------------------|-------|---|
| 21  | Output N    | Threshold input       | C W U | EIS14<br>DPT 5.004 1byte<br>EIS10<br>DPT 7.001 2bytes |
| If this communication object is activated , the threshold input value from bus compare with threshold 1 and threshold 2, and calculate the status of switch according to the setting of database. |             |                       |       |   |
| 22  | Output N    | Change threshold<br>1 | C W U | EIS14<br>DPT 5.004 1byte<br>EIS10<br>DPT 7.001 2bytes |
| Change threshold1 value via bus.  |             |                       |       |   |
| 23  | Output N    | Change threshold<br>2 | C W U | EIS14<br>DPT 5.004 1byte<br>EIS10<br>DPT 7.001 2bytes |
| Change threshold2 value via bus.  |             |                       |       |   |

Table 15 Threshold

## 4.2.12 Objects “Blinds”

| NO.  | Object name | Function                          | Flags | Data type                 |
|--|-------------|-----------------------------------|-------|---------------------------|
| 24   | Output N    | Moving for<br>Blinds(0-UP,1-DOWN) | C W U | EIS1<br>DPT 1.008<br>1bit |
| This communication object control blinds move UP/DOWN. The blinds move UP/DOWN run or stop by the value of receiving telegram from the bus or stop until timeout . |             |                                   |       |                           |
| 25   | Output N    | Adjust/Stop for Blinds            | C W U | EIS1<br>DPT 1.007<br>1bit |
| This communication object control blinds adjust or stop. If the blinds moving,Then receiving '1' or '0' for stop moving.Otherwise adjust the blinds.               |             |                                   |       |                           |

Table 16 Blinds

## 4.2.13 Objects “Logic”

| NO.  | Object name | Function           | Flags | Data type                 |
|--|-------------|--------------------|-------|---------------------------|
| 26   | Output N    | Logic connection 1 | C W U | EIS1<br>DPT 1.002<br>1bit |
| If this function has been activated , this communication object will show and the logic function is valid. The logic function include : AND,OR,XOR,GATE. |             |                    |       |                           |
| 27   | Output N    | Logic connection 2 | C W U | EIS1<br>DPT 1.002<br>1bit |
| If this function has been activated, this communication object will show and the logic function is valid. The logic function include : AND,OR,XOR,GATE.  |             |                    |       |                           |

Table 17 Logic

## 4.2.14 Objects “Heating”

| Number | Name     | Object Function               | Descrip... | Group Addr... | Length | C | R | W | T | U |
|--------|----------|-------------------------------|------------|---------------|--------|---|---|---|---|---|
| 0      | General  | Send cycles                   |            |               | 1 bit  | C | R | - | T | - |
| 10     | Output A | Heat with 1bit control        |            |               | 1 bit  | C | - | W | - | U |
| 11     | Output A | Always response switch status |            |               | 1 bit  | C | R | - | T | - |
| 12     | Output A | Forced position               |            |               | 1 bit  | C | - | W | - | U |
| 14     | Output A | R/W statistic for counter     |            |               | 4 Byte | C | R | W | T | U |
| 15     | Output A | Alarm for counter out         |            |               | 1 bit  | C | R | - | T | - |

| NO.  | Object name | Function                 | Flags | Data type                   |
|--|-------------|--------------------------|-------|-----------------------------|
| 10   | Output N    | Heat with 1 bit control  | C W U | EIS1<br>DPT 1.001<br>1bit   |
| If work in heating actuator, this communication object default is valid. Start PWM by receiving telegram “1”,stop PWM by receiving telegram “0” , start running automatic when power on, and set by ETS  |             |                          |       |                             |
| 10   | Output N    | Heat with 1 byte control | C W U | EIS14<br>DPT 5.004<br>1byte |
| If select “heat with byte control”, this communication object is valid. Can change valve of PWM by receive 1byte data. Output ON if receiving value is 255 , output OFF if receiving value is 0, otherwise output PWM according to the value of receiving telegram from bus. |             |                          |       |                             |

Table 18 Heating actuator

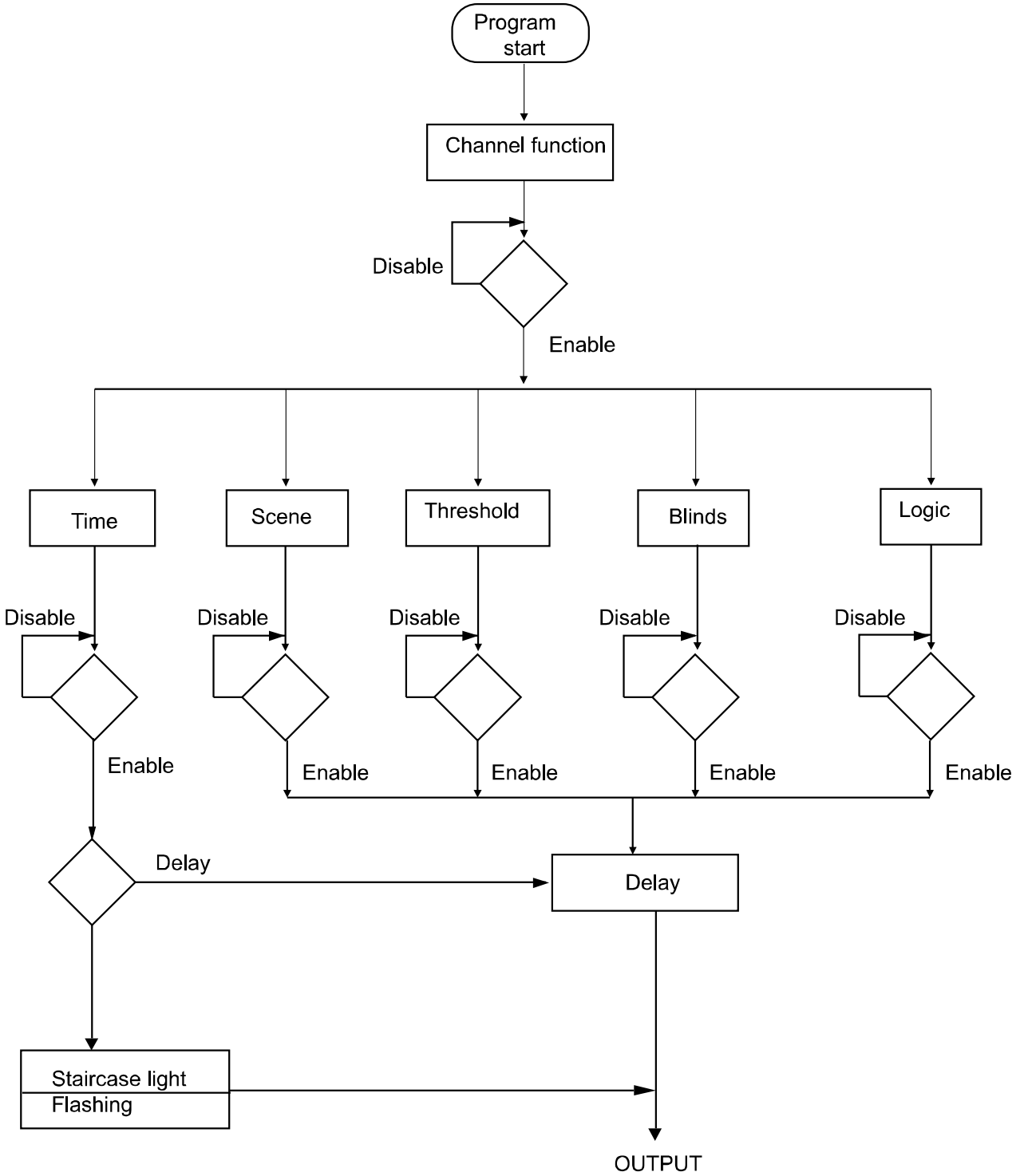
**4.2.15 Objects “Forced position”**

| <b>NO.</b>   | <b>Object name</b> | <b>Function</b> | <b>Flags</b> | <b>Data type</b>          |
|--|--------------------|-----------------|--------------|---------------------------|
| <b>12</b>  | Output N           | Forced position | C R T        | EIS1<br>DPT 1.001<br>1bit |
| This communication object is used to forced PWM operation.The valve of PWM can set in ets. |                    |                 |              |                           |

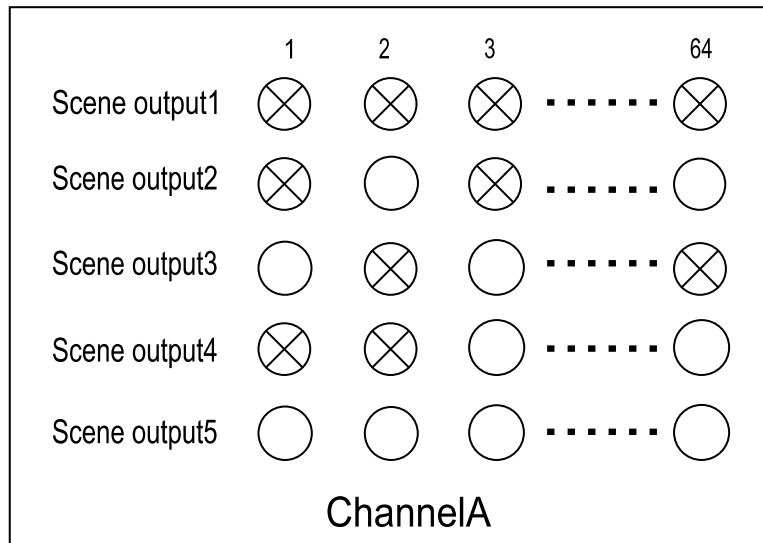
**Table 19** Forced position

# 5-Application

## 5.1 Program functions diagram



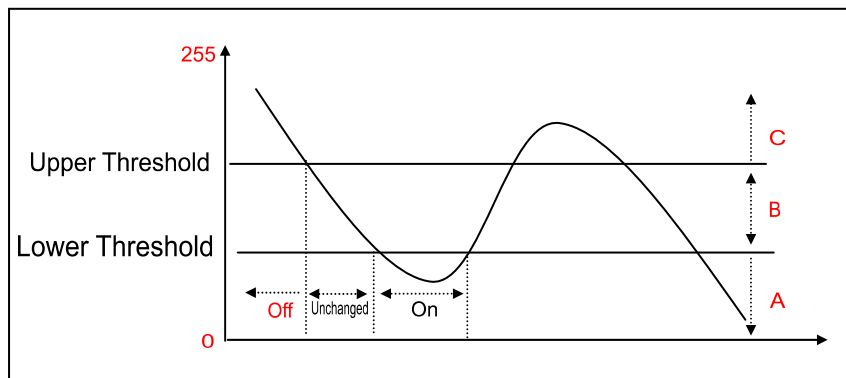
5.2 Scene



Per channel can be stored 5 scenes in the device , the number of scenes can select between 1 to 64 .  
 Channel B,C...'is same as channel A.

5.3 Threshold

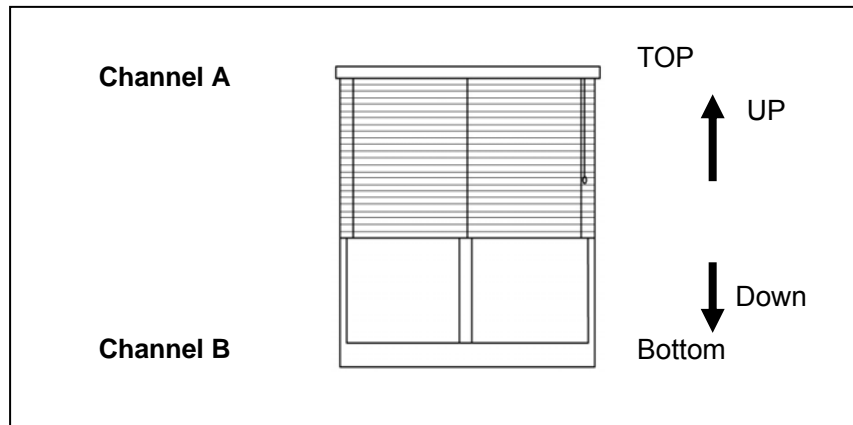
The threshold include two threshold value are the upper threshold and lower threshold. They are can be set between 0 and 255.



The upper threshold , lower threshold values and the state of ON and OFF can be set by using ETS software.  
 For example: ETS set A=ON, B=Unchanged, C=OFF.

## 5.4 Blinds

The blinds function need two channels for driver, the first channel control blinds UP, and the second channel control blinds DOWN.



In the above combination. If start running the blinds UP, then channel A switching ON and the channel B switching OFF. If start running the blinds DOWN, then channel B switching ON and the channel A switching OFF.

when running time out, the channel A and the Channel B will switch OFF together.

UP/Adjustment :    A→ON  
                          B→OFF

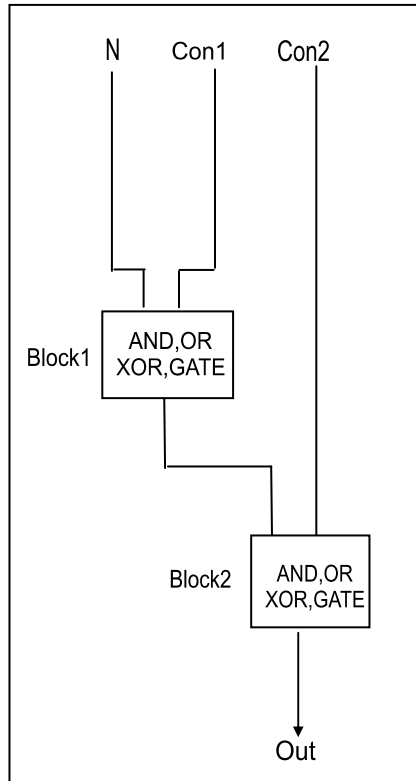
DOWN/Adjustment : A→OFF  
                          B→ON

Stop :    A→OFF  
          B→OFF

Other combinations are similar to the here.

5.5 Logic function

Logic function include two logic blocks in side. Both of logic block 1 and 2 allow select “AND”, “OR”, “XOR”, “GATE” logic by user



Note: N=channel A.B.C...  
 Con1=Logic connection1  
 Con2=Logic connection2

**AND**

| N | L | R |
|---|---|---|
| 0 | 0 | 0 |
| 0 | 1 | 0 |
| 1 | 0 | 0 |
| 1 | 1 | 1 |

**GATE**

| N | L | R |
|---|---|---|
| 0 | 1 | 0 |
| 1 | 1 | 1 |
| 1 | 0 | 1 |
| 0 | 0 | 1 |
| 0 | 1 | 0 |
| 0 | 0 | 0 |
| 1 | 0 | 0 |
| 1 | 1 | 1 |

Lock  
 Unlock  
 Lock  
 Unlock



**OR**

| N | L | R |
|---|---|---|
| 0 | 0 | 0 |
| 0 | 1 | 1 |
| 1 | 0 | 1 |
| 1 | 1 | 1 |

**XOR**

| N | L | R |
|---|---|---|
| 0 | 0 | 0 |
| 0 | 1 | 1 |
| 1 | 0 | 1 |
| 1 | 1 | 0 |

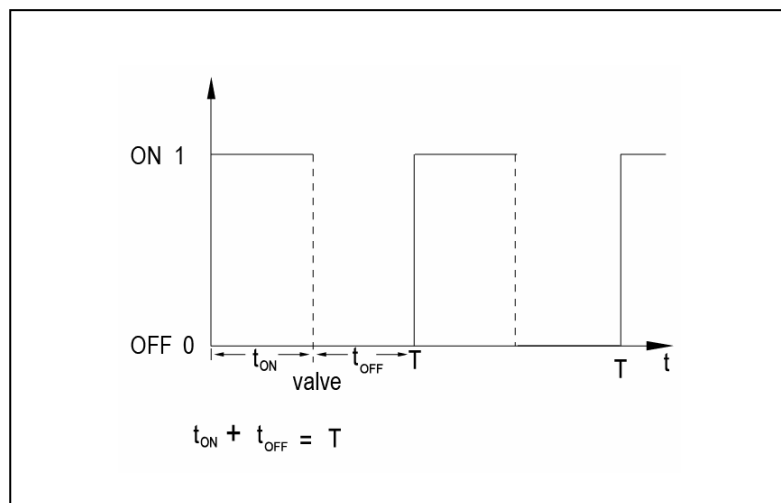
Note: N=channel A, B, C...  
 L=Logic connection  
 R= result

**5.6 PWM control**

Type of control can be control as 1bit or 1byte.

**1bit PWM(1-start/0-stop):** The PWM start and switch ON by the value of receiving telegram "1", and stop by "0".

**1byte(255-ON/0-OFF/other valve):** the switch ON always by the value of receiving telegram "255", the switch OFF by the value of receiving telegram "0". The PWM runs and pulse width of PWM is set according to the value of receiving telegram (1 to 254 )



1bit pwm control:valve=0%(OFF)

**10%(26)**

**20%(51)**

**30%(77)**

**40%(102)**

**50%(128)**

**60%(153)**

**70%(179)**

**80%(204)**

**90%(230)**

**100%(ON)**

1byte pwm control:valve= x (x:0..255)

**X=0(OFF)**

**1..25(0%)**

**26..50(10%)**

**51..76(20%)**

**77-101(30%)**

**102-127(40%)**

**128-152(50%)**

**153-178(60%)**

**179-203(70%)**

**204-229(80%)**

**230-254(90%)**

**255 (ON)**



Lined area for technical drawing or text, consisting of multiple horizontal dashed lines.

Blank area with horizontal dashed lines for technical drawing or notes.